



Order: (888)-282-5810 (Phone)  
(818)-707-0392 (Fax)  
[order@abiocode.com](mailto:order@abiocode.com)  
Web: [www.Abiocode.com](http://www.Abiocode.com)

---

## GI (C2) Antibody, Rabbit Polyclonal

**Cat#:** R1233-3

**Quantity:** 100 ul

**Predicted | Observed M.W.:** 128 kDa

**Lot#:** Refer to vial

**Application:** WB

**Uniprot ID:** Q9SQI2

### **Background:**

Protein GIGANTEA (GI) is involved in regulation of circadian rhythm and photoperiodic flowering, and may play a role in the maintenance of circadian amplitude and period length. GI is involved in phytochrome B signaling. GI stabilizes ADO3 and the circadian photoreceptor ADO1/ZTL, and regulates 'CONSTANS' (CO) in the long-day flowering pathway by modulating the ADO3-dependent protein stability of CDF1 and CDF2, but is not essential to activate CO transcription. GI regulates, via the microRNA miR172, a CO-independent pathway that promotes photoperiodic flowering by inducing 'FLOWERING LOCUS T'.

### **Other Names:**

Protein GIGANTEA

### **Source and Purity:**

Rabbit polyclonal antibodies were produced by immunizing animals with a GST-fusion protein containing the C-terminal region of *arabidopsis thaliana* GI (At1g22770). Antibodies were purified by affinity purification using immunogen.

### **Storage Buffer and Condition:**

Supplied in 1 x PBS (pH 7.4), 100 ug/ml BSA, 40% Glycerol, 0.01% NaN<sub>3</sub>. Store at -20 °C. Stable for 6 months from date of receipt.

### **Species Specificity:**

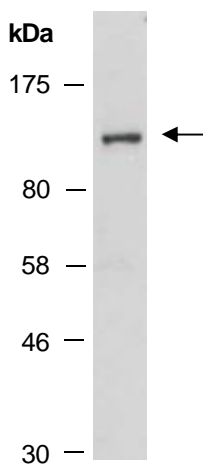
*Arabidopsis thaliana*

### **Tested Applications:**

WB: 1:500-1:2,000 (detect endogenous protein\*)

\*: The apparent protein size on WB may be different from the calculated M.W. due to modifications.

**Product Data:**



**Fig 1.** Western blot of total cell extracts from wild type arabidopsis leaves, using anti-GI (C2) (R1233-3) at RT for 2 h.