



Order: (888)-282-5810 (Phone)
(818)-707-0392 (Fax)
order@abiocode.com
Web: www.Abiocode.com

GI (vPair™) Antibodies

Cat#: R1233-vp

Lot#: Refer to vial

Predicted | Observed M.W.: 128 kDa

Uniprot ID: Q9SQI2

Application: WB

Quantity: 50 ul GI (C1) (R1233-2) Rabbit Polyclonal Antibody &
50 ul GI (C2) (R1233-3) Rabbit Polyclonal Antibody

Product Introduction:

vPair™ antibodies represent a pair of fully characterized antibodies that recognize two different regions of a target protein. The product is developed by Abiocode to address whether the signal observed truly represents the protein of interest, an often encountered issue in antibody-based assays. The use of a pair of fully characterized vPair™ antibodies in the same assay can validate signal specificity since vPair™ antibodies recognize two independent epitopes of the same protein. Different sets of vPair™ antibodies are developed at Abiocode to work with specific applications, including antibody arrays, Western blot, IP-Western, CHIP, IHC, and FACS.

Background:

Protein GIGANTEA (GI) is involved in regulation of circadian rhythm and photoperiodic flowering, and may play a role in the maintenance of circadian amplitude and period length. GI is involved in phytochrome B signaling. GI stabilizes ADO3 and the circadian photoreceptor ADO1/ZTL, and regulates 'CONSTANS' (CO) in the long-day flowering pathway by modulating the ADO3-dependent protein stability of CDF1 and CDF2, but is not essential to activate CO transcription. GI regulates, via the microRNA miR172, a CO-independent pathway that promotes photoperiodic flowering by inducing 'FLOWERING LOCUS T'.

Other Names:

Protein GIGANTEA

Source and Purity:

Rabbit polyclonal antibodies were produced by immunizing animals with GST-fusion proteins containing 2 distinct C-terminal regions of *arabidopsis thaliana* GI (At1g22770). Antibodies were purified by affinity purification using immunogen.

Species Specificity:

Arabidopsis thaliana

Storage Buffer and Condition:

Supplied in 1 x PBS (pH 7.4), 100 ug/ml BSA, 40% Glycerol, 0.01% NaN₃. Store at -20 °C. Stable for 6 months from date of receipt.

Tested Applications:

WB: 1:500-1:2,000 (detect endogenous protein*)

*: The apparent protein size on WB may be different from the calculated M.W. due to modifications.

Product Data:

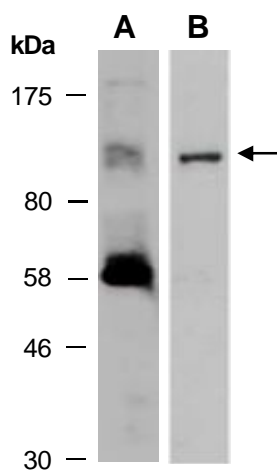


Fig 1. Western blot of total cell extracts from wild type arabidopsis leaves, using 2 independent Abs against 2 distinct regions of arabidopsis Gl [A: anti-Gl (C1) (R1233-2); B: anti-Gl (C2) (R1233-3)] at RT for 2 h.