



Order: (888)-282-5810 (Phone)
(818)-707-0392 (Fax)
order@abiocode.com
Web: www.Abiocode.com

TMK3 (N) Antibody, Rabbit Polyclonal

Cat#: R2093-1

Quantity: 100 ul

Predicted | Observed M.W.: 102 kDa

Lot#: Refer to vial

Application: WB

Uniprot ID: Q9SIT1

Background:

TRANSMEMBRANE KINASE 3 (TMK3) is also known as Leucine-rich repeat receptor-like protein kinase (LRR-RLK). TMK3 is located in plasma membrane and plant-type cell wall. TMK3 is involved in protein amino acid phosphorylation and pollen development. TMK3 has ATP binding and protein serine/threonine kinase activities.

Other Names:

LRR-RLK, Leucine-rich repeat receptor-like protein kinase, Receptor-like kinase TMK3, Putative receptor-like protein kinase

Source and Purity:

Rabbit polyclonal antibodies were produced by immunizing animals with a GST-fusion protein containing the N-terminal region of *arabidopsis thaliana* TMK3 (At2g01820). Antibodies were purified by affinity purification using immunogen.

Species Specificity:

Arabidopsis thaliana

Storage Buffer and Condition:

Supplied in 1 x PBS (pH 7.4), 100 ug/ml BSA, 40% Glycerol, 0.01% NaN₃. Store at -20 °C. Stable for 6 months from date of receipt.

Tested Applications:

WB: 1:500-1:2,000 (detect endogenous protein*)

*: The apparent protein size on WB may be different from the calculated M.W. due to modifications.

Product Data:

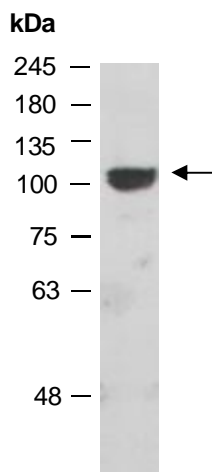


Fig 1. Western blot of total cell extracts from wild type arabidopsis leaves, using anti-TMK3 (N) (R2093-1) at RT for 2 h.