



Order: (888)-282-5810 (Phone)
(818)-707-0392 (Fax)
order@abiocode.com
Web: www.Abiocode.com

SRSF3 (N) Antibody, Rabbit Polyclonal

Cat#: R2044-1

Quantity: 100 ul

Predicted | Observed M.W.: 19 | 22 kDa

Lot#: Refer to vial

Application: WB

Uniprot ID: P84103

Background:

Serine/arginine-rich splicing factor 3 (SRSF3) belongs to the splicing factor SR family and may be involved in RNA processing in relation with cellular proliferation and/or maturation.

Other Names:

Serine/arginine-rich splicing factor 3, Pre-mRNA-splicing factor SRP20, Splicing factor, arginine/serine-rich 3, SFRS3, SRP20

Source and Purity:

Rabbit polyclonal antibodies were produced by immunizing animals with a GST-fusion protein containing the N-terminal region of human SRSF3. Antibodies were purified by affinity purification using immunogen.

Storage Buffer and Condition:

Supplied in 1 x PBS (pH 7.4), 100 ug/ml BSA, 40% Glycerol, 0.01% NaN₃. Store at -20 °C. Stable for 6 months from date of receipt.

Species Specificity:

Human, Mouse

Tested Applications:

WB: 1:500-1:2,000 (detect endogenous protein*)

*: The apparent protein size on WB may be different from the calculated M.W. due to modifications.

Product Data:

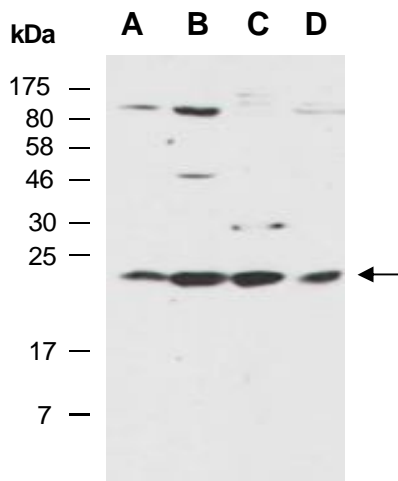


Fig 1. Western blot of total cell extracts from A) mouse brain; B) mouse thymus; C) human HeLa; D) human Jurkat; using anti-SRSF3 (N) (R2044-1) at RT for 2 h.