



Order: (888)-282-5810 (Phone)
(818)-707-0392 (Fax)
order@abiocode.com
Web: www.Abiocode.com

FCRL4 (N) Antibody, Rabbit Polyclonal

Cat#: R2921-1

Quantity: 100 ul

Predicted | Observed M.W.: 57 | 60 kDa

Lot#: Refer to vial

Application: WB

Uniprot ID: Q96PJ5

Background:

Fc receptor-like protein 4 (FCRL4) is a member of the immunoglobulin receptor superfamily and is one of several Fc receptor-like glycoproteins clustered on the long arm of chromosome 1. FCRL4 has four extracellular C2-type immunoglobulin domains, a transmembrane domain and a cytoplasmic domain that contains three immune-receptor tyrosine-based inhibitory motifs. FCRL4 may play a role in the function of memory B-cells in the epithelia. Aberrations in the chromosomal region encoding this gene are associated with non-Hodgkin lymphoma and multiple myeloma.

Other Names:

Fc receptor-like protein 4, FcR-like protein 4, FcRL4, Fc receptor homolog 4, FcRH4, IFGP family protein 2, hIFGP2, Immune receptor translocation-associated protein 1, CD307d, FCRH4, IFGP2, IRTA1

Source and Purity:

Rabbit polyclonal antibodies were produced by immunizing animals with a GST-fusion protein containing the N-terminal region of human FCRL4. Antibodies were purified by affinity purification using immunogen.

Storage Buffer and Condition:

Supplied in 1 x PBS (pH 7.4), 100 ug/ml BSA, 40% Glycerol, 0.01% NaN₃. Store at -20 °C. Stable for 6 months from date of receipt.

Species Specificity:

Human, Mouse

Tested Applications:

WB: 1:500-1:2,000 (detect endogenous protein*)

*: The apparent protein size on WB may be different from the calculated M.W. due to modifications.

Product Data:

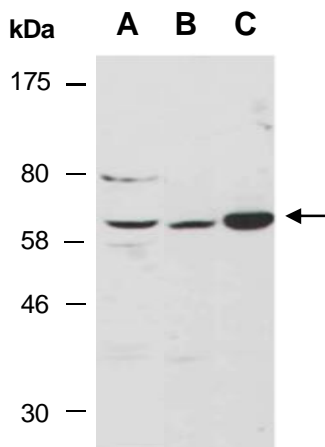


Fig 1. Western blot of total cell extracts from A) mouse thymus; B) human HeLa; C) human Jurkat, using anti-FCRL4 (N) (R2921-1) at RT for 2 h.