



Order: (888)-282-5810 (Phone)
(818)-707-0392 (Fax)
order@abiocode.com
Web: www.Abiocode.com

METTL3 (C) Antibody, Rabbit Polyclonal

Cat#: R3383-2

Quantity: 100 ul

Predicted | Observed M.W.: 64 | 70 kDa

Lot#: Refer to vial

Application: WB

Uniprot ID: Q86U44

Background:

Methyltransferase-like protein 3 (METTL3) is a N6-methyltransferase that methylates adenosine residues of some mRNAs and acts as a regulator of the circadian clock. N6-methyladenosine (m6A), which takes place at the 5'-[AG]GAC-3' consensus sites of some mRNAs, plays a role in the efficiency of mRNA splicing and processing. M6A regulates the length of the circadian clock: acts as an early pace-setter in the circadian loop by putting mRNA production on a fast-track for facilitating nuclear processing, thereby providing an early point of control in setting the dynamics of the feedback loop.

Other Names:

N6-adenosine-methyltransferase 70 kDa subunit, Methyltransferase-like protein 3, MTA70, MT-A70

Source and Purity:

Rabbit polyclonal antibodies were produced by immunizing animals with a GST-fusion protein containing C-terminal region of human METTL3. Antibodies were purified by affinity purification using immunogen.

Storage Buffer and Condition:

Supplied in 1 x PBS (pH 7.4), 100 ug/ml BSA, 40% Glycerol, 0.01% NaN₃. Store at -20 °C. Stable for 6 months from date of receipt.

Species Specificity:

Human, Mouse

Tested Applications:

WB: 1:500-1:2,000 (detect endogenous protein*)

*: The apparent protein size on WB may be different from the calculated M.W. due to modifications.

Product Data:

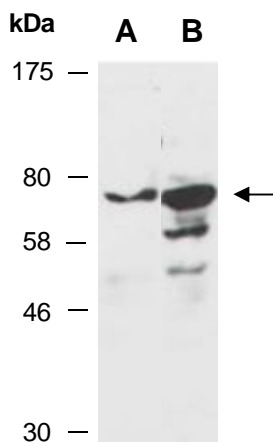


Fig 1. Western blot of total cell extracts from A) mouse thymus; B) human Jurkat, using anti-METTL3 (C) (R3383-2) at RT for 2 h.