



Order: (888)-282-5810 (Phone)  
(818)-707-0392 (Fax)  
[order@abiocode.com](mailto:order@abiocode.com)  
Web: [www.Abiocode.com](http://www.Abiocode.com)

---

## **PIK3CD (N) Antibody, Rabbit Polyclonal**

**Cat#: R3421-1**

**Quantity: 100 ul**

**Predicted | Observed M.W.: 119 kDa**

**Lot#: Refer to vial**

**Application: WB**

**Uniprot ID: O00329**

### **Background:**

Phosphatidylinositol 4,5-bisphosphate 3-kinase catalytic subunit delta isoform (Plk3CD) is a phosphoinositide-3-kinase (PI3K) that phosphorylates PtdIns(4,5)P<sub>2</sub> (Phosphatidylinositol 4,5-bisphosphate) to generate phosphatidylinositol 3,4,5-trisphosphate (PIP<sub>3</sub>). PIP<sub>3</sub> plays a key role by recruiting PH domain-containing proteins to the membrane, including AKT1 and PDK1, to activate signaling cascades involved in cell growth, survival, proliferation, motility and morphology. PIK3CD mediates immune responses. PIK3CD is required for B-cell receptor (BCR) signaling and plays a role in B-cell development, proliferation, migration, and function. PIK3CD is also required for T-cell receptor (TCR) signaling and proliferation, signaling and cytokine production of naive, effector and memory T-cells. Together with PIK3CG, PIK3CD is involved in natural killer (NK) cell development, maturation and function.

### **Other Names:**

Phosphatidylinositol 4,5-bisphosphate 3-kinase catalytic subunit delta isoform, PI3-kinase subunit delta, PI3K-delta, PI3Kdelta, PtdIns-3-kinase subunit delta, Phosphatidylinositol 4,5-bisphosphate 3-kinase 110 kDa catalytic subunit delta, PtdIns-3-kinase subunit p110-delta, p110delta

### **Source and Purity:**

Rabbit polyclonal antibodies were produced by immunizing animals with a GST-fusion protein containing the N-terminal region of human PIK3CD. Antibodies were purified by affinity purification using immunogen.

### **Storage Buffer and Condition:**

Supplied in 1 x PBS (pH 7.4), 100 ug/ml BSA, 40% Glycerol, 0.01% NaN<sub>3</sub>. Store at -20 °C. Stable for 6 months from date of receipt.

### **Tested Applications:**

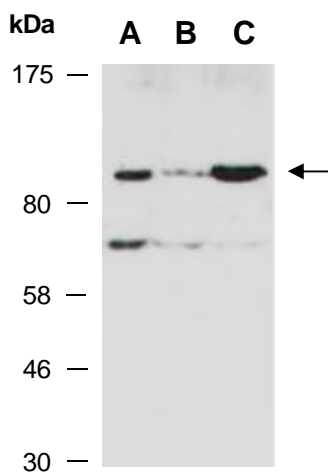
WB: 1:500-1:2,000 (detect endogenous protein\*)

\*: The apparent protein size on WB may be different from the calculated M.W. due to modifications.

**Species Specificity:**

Human, Mouse

**Product Data:**



**Fig 1.** Western blot of total cell extracts from A) mouse thymus; B) human HeLa; C) human Jurkat, using anti-PIK3CD (N) (R3421-1) at RT for 2 h.