



Order: (888)-282-5810 (Phone)  
(818)-707-0392 (Fax)  
[order@abiocode.com](mailto:order@abiocode.com)  
Web: [www.Abiocode.com](http://www.Abiocode.com)

---

## **VTI1A (N) Antibody, Rabbit Polyclonal**

**Cat#: R2894-1**

**Quantity: 100 ul**

**Predicted | Observed M.W.: 25 | 30 kDa**

**Lot#: Refer to vial**

**Application: WB**

**Uniprot ID: Q96AJ9**

### **Background:**

Vesicle transport through interaction with t-SNAREs homolog 1A (VTI1A) belongs to the VTI1 family. VTI1A is a V-SNARE that mediates vesicle transport pathways through interactions with t-SNAREs on the target membrane. These interactions are proposed to mediate aspects of the specificity of vesicle trafficking and to promote fusion of the lipid bilayers. VTI1A is involved in vesicular transport from the late endosomes to the trans-Golgi network. Along with VAMP7, VTI1A is involved in a non-conventional RAB1-dependent traffic route to the cell surface used by KCNIP1 and KCND2. Furthermore, VTI1A may be involved in increased cytokine secretion associated with cellular senescence.

### **Other Names:**

Vesicle transport through interaction with t-SNAREs homolog 1A, Vesicle transport v-SNARE protein Vti1-like 2, Vti1-rp2

### **Source and Purity:**

Rabbit polyclonal antibodies were produced by immunizing animals with a GST-fusion protein containing the N-terminal region of human VTI1A. Antibodies were purified by affinity purification using immunogen.

### **Storage Buffer and Condition:**

Supplied in 1 x PBS (pH 7.4), 100 ug/ml BSA, 40% Glycerol, 0.01% NaN<sub>3</sub>. Store at -20 °C. Stable for 6 months from date of receipt.

### **Species Specificity:**

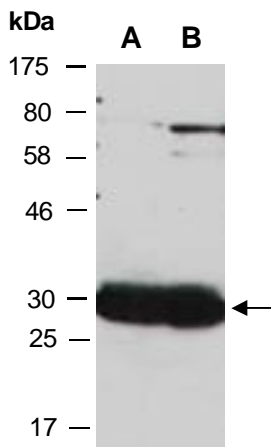
Human, Mouse

### **Tested Applications:**

WB: 1:1,000-1:3,000 (detect endogenous protein\*)

\*: The apparent protein size on WB may be different from the calculated M.W. due to modifications.

**Product Data:**



**Fig 1.** Western blot of total cell extracts from A) mouse brain, B) mouse thymus; using anti-VTI1A (N) (R2894-1) at RT for 2 h.