



Order: (888)-282-5810 (Phone)
(818)-707-0392 (Fax)
order@abiocode.com
Web: www.Abiocode.com

KTN1 (C) Antibody, Rabbit Polyclonal

Cat#: R2544-2

Quantity: 100 ul

Predicted | Observed M.W.: 156 kDa

Lot#: Refer to vial

Application: WB

Uniprot ID: Q86UP2

Background:

Kinectin (KTN1) is an integral membrane protein that is a member of the kinectin protein family. KTN1 is primarily localized to the endoplasmic reticulum membrane. KTN1 binds to kinesin and may be involved in intracellular organelle motility. KTN1 also binds to the translation elongation factor-delta and may be involved in the assembly of the elongation factor-1 complex.

Other Names:

Kinectin, CG-1 antigen, Kinesin receptor, CG1, KIAA0004

Source and Purity:

Rabbit polyclonal antibodies were produced by immunizing animals with a GST-fusion protein containing the C-terminal region of human KTN1. Antibodies were purified by affinity purification using immunogen.

Storage Buffer and Condition:

Supplied in 1 x PBS (pH 7.4), 100 ug/ml BSA, 40% Glycerol, 0.01% NaN₃. Store at -20 °C. Stable for 6 months from date of receipt.

Species Specificity:

Human

Tested Applications:

WB: 1:500-1:2,000 (detect endogenous protein*)

*: The apparent protein size on WB may be different from the calculated M.W. due to modifications.

Product Data:

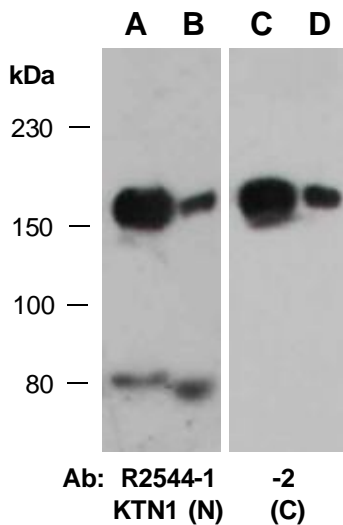


Fig 1. Western blot of total cell extracts from A, C) human HeLa; B, D) human Jurkat; using 2 independent Abs against 2 distinct regions of human KTN1 at RT for 2 h.