



Order: (888)-282-5810 (Phone)
(818)-707-0392 (Fax)
order@abiocode.com
Web: www.Abiocode.com

TIMP1 (C2) Antibody, Rabbit Polyclonal

Cat#: R2155-2

Quantity: 100 ul

Predicted | Observed M.W.: 23 kDa

Lot#: Refer to vial

Application: WB

Uniprot ID: P01033

Background:

Metalloproteinase inhibitor 1 (TIMP1) belongs to the protease inhibitor I35 (TIMP) family and functions by forming one to one complexes with target metalloproteinases, such as collagenases, and irreversibly inactivates them by binding to their catalytic zinc cofactor. TIMP1 acts on MMP1, MMP2, MMP3, MMP7, MMP8, MMP9, MMP10, MMP11, MMP12, MMP13 and MMP16; it does not act on MMP14. TIMP1 also functions as a growth factor that regulates cell differentiation, migration and cell death and activates cellular signaling cascades via CD63 and ITGB1.

Other Names:

Metalloproteinase inhibitor 1, Erythroid-potentiating activity, EPA, Fibroblast collagenase inhibitor, Collagenase inhibitor, Tissue inhibitor of metalloproteinases 1, TIMP-1, CLGI, TIMP

Source and Purity:

Rabbit polyclonal antibodies were produced by immunizing animals with a GST-fusion protein containing the C-terminal region of human TIMP1. Antibodies were purified by affinity purification using immunogen.

Storage Buffer and Condition:

Supplied in 1 x PBS (pH 7.4), 100 ug/ml BSA, 40% Glycerol, 0.01% NaN₃. Store at -20 °C. Stable for 6 months from date of receipt.

Species Specificity:

Human

Tested Applications:

WB: 1:500-1:2,000 (detect endogenous protein*)

*: The apparent protein size on WB may be different from the calculated M.W. due to modifications.

Product Data:

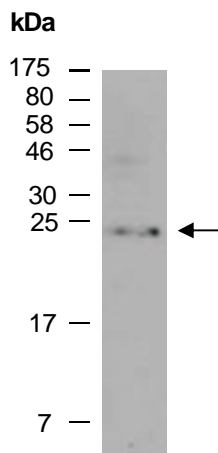


Fig 1. Western blot of total cell extracts from human Jurkat; using anti-TIMP1 (C2) (R2155-2) at RT for 2 h.