



Order: (888)-282-5810 (Phone)  
(818)-707-0392 (Fax)  
[order@abiocode.com](mailto:order@abiocode.com)  
Web: [www.Abiocode.com](http://www.Abiocode.com)

---

## FER (M) Antibody, Rabbit Polyclonal

**Cat#:** R2096-3

**Quantity:** 100 ul

**Predicted | Observed M.W.:** 98 kDa

**Lot#:** Refer to vial

**Application:** WB

**Uniprot ID:** Q9SCZ4

### **Background:**

Receptor-like protein kinase FERONIA (FER) is a single-pass type I membrane protein that belongs to protein kinase superfamily and Ser/Thr protein kinase family. FER mediates the female control of male gamete delivery during fertilization, including growth cessation of compatible pollen tubes ensuring a reproductive isolation barriers. FER is required for cell elongation during vegetative growth, mostly in a brassinosteroids- (BR-) independent manner.

### **Other Names:**

Receptor-like protein kinase FERONIA, Protein SIRENE, AAK1, SIR, SRN

### **Source and Purity:**

Rabbit polyclonal antibodies were produced by immunizing animals with a GST-fusion protein containing the middle region of *arabidopsis thaliana* FER (At3g51550). Antibodies were purified by affinity purification using immunogen.

### **Storage Buffer and Condition:**

Supplied in 1 x PBS (pH 7.4), 100 ug/ml BSA, 40% Glycerol, 0.01% NaN<sub>3</sub>. Store at -20 °C. Stable for 6 months from date of receipt.

### **Species Specificity:**

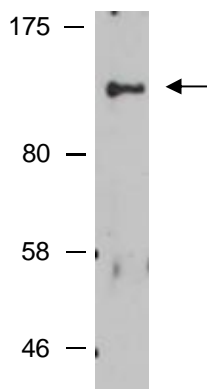
*Arabidopsis thaliana*

### **Tested Applications:**

WB: 1:500-1:2,000 (detect endogenous protein\*)

\*: The apparent protein size on WB may be different from the calculated M.W. due to modifications.

**Product Data:**



**Fig 1.** Western blot analysis of total protein extracts from wild type arabidopsis leaves, using anti-FER (M) (R2096-3) at RT for 2 h.