



Order: (888)-282-5810 (Phone)
(818)-707-0392 (Fax)
order@abiocode.com
Web: www.Abiocode.com

MEF2C (N) Antibody, Rabbit Polyclonal

Cat#: R1367-1

Quantity: 100 ul

Predicted | Observed M.W.: 51 kDa

Lot#: Refer to vial

Application: WB

Uniprot ID: Q06413

Background:

Myocyte-specific enhancer factor 2C (MEF2C) is a transcription activator which binds specifically to the MEF2 element present in the regulatory regions of many muscle-specific genes. MEF2C controls cardiac morphogenesis and myogenesis, and is also involved in vascular development. MEF2C plays an essential role in hippocampal-dependent learning and memory by suppressing the number of excitatory synapses and thus regulating basal and evoked synaptic transmission. MEF2C is also crucial for normal neuronal development, distribution, and electrical activity in the neocortex. MEF2C is necessary for proper development of megakaryocytes and platelets and for bone marrow B-lymphopoiesis. MEF2C is required for B-cell survival and proliferation in response to BCR stimulation, efficient IgG1 antibody responses to T-cell-dependent antigens and for normal induction of germinal center B-cells. MEF2C may also be involved in neurogenesis and in the development of cortical architecture.

Other Names:

Myocyte-specific enhancer factor 2C

Source and Purity:

Rabbit polyclonal antibodies were produced by immunizing animals with a GST-fusion protein containing the N-terminal region of human MEF2C. Antibodies were purified by affinity purification using immunogen.

Storage Buffer and Condition:

Supplied in 1 x PBS (pH 7.4), 100 ug/ml BSA, 40% Glycerol, 0.01% NaN₃. Store at -20 °C. Stable for 6 months from date of receipt.

Species Specificity:

Human

Tested Applications:

WB: 1:500-1:2,000 (detect endogenous protein*)

*: The apparent protein size on WB may be different from the calculated M.W. due to modifications.

Product Data:

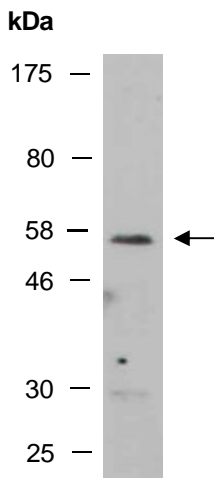


Fig 1. Western blot of total cell extracts from human HeLa; using anti-MEF2C (N) (R1367-1) at RT for 2 h.