



Order: (888)-282-5810 (Phone)
(818)-707-0392 (Fax)
order@abiocode.com
Web: www.Abiocode.com

L1CAM (C) Antibody, Rabbit Polyclonal

Cat#: R1439-2

Quantity: 100 ul

Predicted | Observed M.W.: 140 | 230 kDa

Lot#: Refer to vial

Application: WB

Uniprot ID: P32004

Background:

L1CAM is a cell adhesion molecule with an important role in the development of the nervous system. L1CAM is involved in neuron-neuron adhesion, neurite fasciculation, outgrowth of neurites, etc. L1CAM binds to axonin on neurons.

Other Names:

Neural cell adhesion molecule L1, N-CAM-L1, NCAM-L1, CD171, CAML1, MIC5

Source and Purity:

Rabbit polyclonal antibodies were produced by immunizing animals with a GST-fusion protein containing the C-terminal region of human L1CAM. Antibodies were purified by affinity purification using immunogen.

Storage Buffer and Condition:

Supplied in 1 x PBS (pH 7.4), 100 ug/ml BSA, 40% Glycerol, 0.01% NaN₃. Store at -20 °C. Stable for 6 months from date of receipt.

Species Specificity:

Human

Tested Applications:

WB: 1:500-1:2,000 (detect endogenous protein*)

*: The apparent protein size on WB may be different from the calculated M.W. due to modifications.

Product Data:

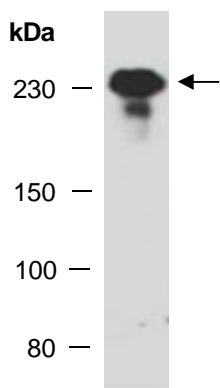


Fig 1. Western blot of total cell extracts from human HeLa, using anti-L1CAM (C) (R1439-2) at RT for 2 h.