



Order: (888)-282-5810 (Phone)
(818)-707-0392 (Fax)
order@abiocode.com
Web: www.Abiocode.com

WASF2 (C) Antibody, Rabbit Polyclonal

Cat#: R1826-2

Quantity: 100 ul

Predicted | Observed M.W.: 54 | 75 kDa

Lot#: Refer to vial

Application: WB

Uniprot ID: Q9Y6W5

Background:

Wiskott-Aldrich syndrome protein family member 2 (WASF2) belongs to the SCAR/WAVE family. WASF2 is a downstream effector molecule involved in the transmission of signals from tyrosine kinase receptors and small GTPases to the actin cytoskeleton. WASF2 promotes formation of actin filaments, and is part of the WAVE complex that regulates lamellipodia formation. The WAVE complex regulates actin filament reorganization via its interaction with the Arp2/3 complex.

Other Names:

Wiskott-Aldrich syndrome protein family member 2, Protein WAVE-2, Verprolin homology domain-containing protein 2, WASP family protein member 2, WAVE2

Source and Purity:

Rabbit polyclonal antibodies were produced by immunizing animals with a GST-fusion protein containing the C-terminal region of mouse WASF2. Antibodies were purified by affinity purification using immunogen.

Storage Buffer and Condition:

Supplied in 1 x PBS (pH 7.4), 100 ug/ml BSA, 40% Glycerol, 0.01% NaN₃. Store at -20 °C. Stable for 6 months from date of receipt.

Species Specificity:

Human, Mouse

Tested Applications:

WB: 1:500-1:2,000 (detect endogenous protein*)

*: The apparent protein size on WB may be different from the calculated M.W. due to modifications.

Product Data:

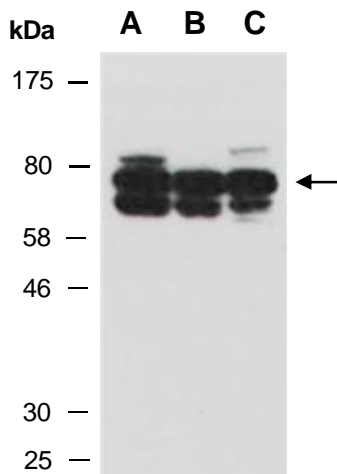


Fig 1. Western blot of total cell extracts from A) mouse thymus, B) human HeLa, C) human Jurkat; using anti-WASF2 (C) (R1826-2) at RT for 2 h.