



Order: (888)-282-5810 (Phone)
(818)-707-0392 (Fax)
order@abiocode.com
Web: www.Abiocode.com

TRABD2A (C2) Antibody, Rabbit Polyclonal

Cat#: R3232-2

Quantity: 100 ul

Predicted | Observed M.W.: 58 kDa

Lot#: Refer to vial

Application: WB

Uniprot ID: Q96V40

Background:

TRAB domain-containing protein 2A (TRABD2A) is a metalloprotease that acts as a negative regulator of the Wnt signaling pathway by mediating the cleavage of the 8 N-terminal residues of a subset of Wnt proteins. Following cleavage, Wnt proteins become oxidized and form large disulfide-bond oligomers, leading to their inactivation. TRABD2A is also able to cleave WNT3A, WNT5, but not WNT11, and is required for head formation.

Other Names:

Metalloprotease TIKI1, TRAB domain-containing protein 2A, C2orf89, TIKI1

Source and Purity:

Rabbit polyclonal antibodies were produced by immunizing animals with a GST-fusion protein containing the C-terminal region of human TRABD2A. Antibodies were purified by affinity purification using immunogen.

Storage Buffer and Condition:

Supplied in 1 x PBS (pH 7.4), 100 ug/ml BSA, 40% Glycerol, 0.01% NaN₃. Store at -20 °C. Stable for 6 months from date of receipt.

Species Specificity:

Human, Mouse

Tested Applications:

WB: 1:500-1:2,000 (detect endogenous protein*)

*: The apparent protein size on WB may be different from the calculated M.W. due to modifications.

Product Data:

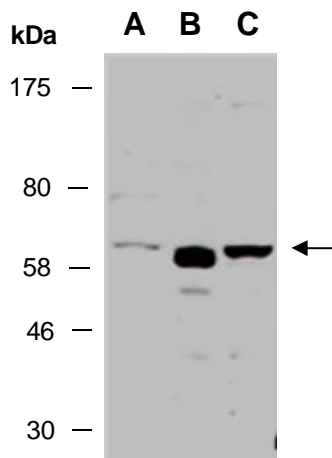


Fig 1. Western blot of total cell extracts from A) mouse thymus; B) human HeLa, C) human Jurkat; using anti-TRABD2A (C2) (R3232-2) at RT for 2 h.