



Order: (888)-282-5810 (Phone)
(818)-707-0392 (Fax)
order@abiocode.com
Web: www.Abiocode.com

FLM (C) Antibody, Rabbit Polyclonal

Cat#: R3367-1

Quantity: 100 ul

Predicted | Observed M.W.: 22 kDa

Lot#: Refer to vial

Application: WB

Uniprot ID: Q9AT76

Background:

FLM is a probable transcription factor involved in the negative regulation of flowering time in both long and short days, probably through the photoperiodic and vernalization pathways. FLM prevents premature flowering.

Other Names:

Agamous-like MADS-box protein AGL27, MADS box FLC1-like nuclear protein, Protein FLOWERING LOCUS M, Protein MADS AFFECTING FLOWERING 1, FK1, FLM, MAF1, At1g77080, F22K20.15

Source and Purity:

Rabbit polyclonal antibodies were produced by immunizing animals with a GST-fusion protein containing the C-terminal region of *arabidopsis thaliana* FLM (At1g77080). Antibodies were purified by affinity purification using immunogen.

Storage Buffer and Condition:

Supplied in 1 x PBS (pH 7.4), 100 ug/ml BSA, 40% Glycerol, 0.01% NaN₃. Store at -20 °C. Stable for 6 months from date of receipt.

Species Specificity:

Arabidopsis thaliana

Tested Applications:

WB: 1:500-1:2,000 (detect endogenous protein*)

*: The apparent protein size on WB may be different from the calculated M.W. due to modifications.



Order: (888)-282-5810 (Phone)
(818)-707-0392 (Fax)
order@abiocode.com
Web: www.Abiocode.com

Product Data:

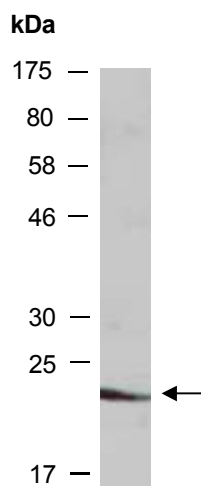


Fig 1. Western blot analysis of total protein extracts from wild type arabidopsis leaves, using anti-FLM (C) (R3367-1) at RT for 2 h.