



Order: (888)-282-5810 (Phone)
(818)-707-0392 (Fax)
order@abiocode.com
Web: www.Abiocode.com

ATXR6 (N) Antibody, Rabbit Polyclonal

Cat#: R3507-1

Quantity: 100 ul

Predicted | Observed M.W.: 40 kDa

Lot#: Refer to vial

Application: WB

Uniprot ID: Q9FNE9

Background:

ATXR6 is a histone methyltransferase that specifically monomethylates 'Lys-37' of histone H3 (H3K27me1). ATXR6 has higher activity on nucleosomes containing H3.1 than H3.3. ATXR6 is involved in the formation of constitutive heterochromatin and the silencing of heterochromatic elements. ATXR6 may act as a positive regulator of the G1-S transition. ATXR6 influences which sets of rRNA gene variants are expressed or silenced. ATXR6 is up-regulated by E2FB.

Other Names:

Histone-lysine N-methyltransferase ATXR6, Protein SET DOMAIN GROUP 34, Trithorax-related protein 6, TRX-related protein 6, SDG34, SET34, At5g24330, MOP9.18'

Source and Purity:

Rabbit polyclonal antibodies were produced by immunizing animals with a GST-fusion protein containing the N-terminal region of *arabidopsis thaliana* ATXR6 (AT5G24330). Antibodies were purified by affinity purification using immunogen.

Storage Buffer and Condition:

Supplied in 1 x PBS (pH 7.4), 100 ug/ml BSA, 40% Glycerol, 0.01% NaN₃. Store at -20 °C. Stable for 6 months from date of receipt.

Species Specificity:

Arabidopsis thaliana

Tested Applications:

WB: 1:500-1:2,000 (detect endogenous protein*)

*: The apparent protein size on WB may be different from the calculated M.W. due to modifications.

Product Data:

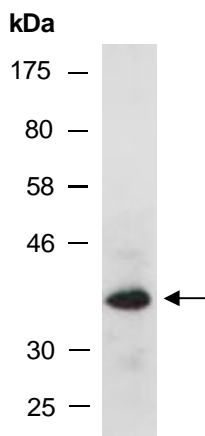


Fig 1. Western blot analysis of total protein extracts from wild type arabidopsis leaves, using anti-ATXR6 (N) (R3507-1) at RT for 2 h.