



Order: (888)-282-5810 (Phone)
(818)-707-0392 (Fax)
order@abiocode.com
Web: www.Abiocode.com

HAP2 (C) Antibody, Rabbit Polyclonal

Cat#: R3514-2

Quantity: 100 ul

Predicted | Observed M.W.: 81 kDa

Lot#: Refer to vial

Application: WB

Uniprot ID: F4JP36

Background:

HAP2 is involved in male fertility. HAP2 is essential for pollen tube guidance, successful gamete attachment and fertilization.

Other Names:

Protein HAPLESS 2, GENERATIVE CELL SPECIFIC 1, GCS1, At4g11720, T5C23

Source and Purity:

Rabbit polyclonal antibodies were produced by immunizing animals with a GST-fusion protein containing the C-terminal region of *arabidopsis thaliana* HAP2 (At4g11720). Antibodies were purified by affinity purification using immunogen.

Storage Buffer and Condition:

Supplied in 1 x PBS (pH 7.4), 100 ug/ml BSA, 40% Glycerol, 0.01% NaN₃. Store at -20 °C. Stable for 6 months from date of receipt.

Species Specificity:

Arabidopsis thaliana

Tested Applications:

WB: 1:500-1:2,000 (detect endogenous protein*)

*: The apparent protein size on WB may be different from the calculated M.W. due to modifications.

Product Data:

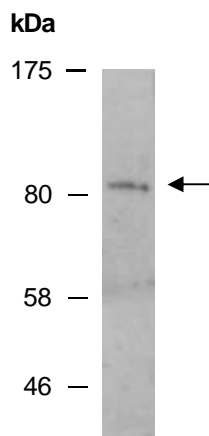


Fig 1. Western blot analysis of total protein extracts from wild type arabidopsis leaves, using anti-HAP2 (C) (R3514-2) at RT for 2 h.