



Order: (888)-282-5810 (Phone)  
(818)-707-0392 (Fax)  
[order@abiocode.com](mailto:order@abiocode.com)  
Web: [www.Abiocode.com](http://www.Abiocode.com)

---

## TPP1 (C) Antibody, Rabbit Polyclonal

**Cat#:** R3227-2

**Quantity:** 100 ul

**Predicted | Observed MW:** 61 kDa

**Lot#:** Refer to vial

**Application:** WB

**Uniprot ID:** O14773

### **Background:**

Tripeptidyl-peptidase 1 (TPP1) is a lysosomal serine protease with tripeptidyl-peptidase I activity. TPP1 may act as a non-specific lysosomal peptidase which generates tripeptides from the breakdown products produced by lysosomal proteinases. TPP1 requires substrates with an unsubstituted N-terminus.

### **Other Names:**

Tripeptidyl-peptidase 1, TPP-1, Cell growth-inhibiting gene 1 protein, Lysosomal pepstatin-insensitive protease, LPIC, Tripeptidyl aminopeptidase, Tripeptidyl-peptidase I, TPP-I, CLN2, GIG1, UNQ267/PRO304

### **Source and Purity:**

Rabbit polyclonal antibodies were produced by immunizing animals with a GST-fusion protein containing the C-terminal region of human TPP1. Antibodies were purified by affinity purification using immunogen.

### **Storage Buffer and Condition:**

Supplied in 1 x PBS (pH 7.4), 100 ug/ml BSA, 40% Glycerol, 0.01% NaN<sub>3</sub>. Store at -20 °C. Stable for 6 months from date of receipt.

### **Species Specificity:**

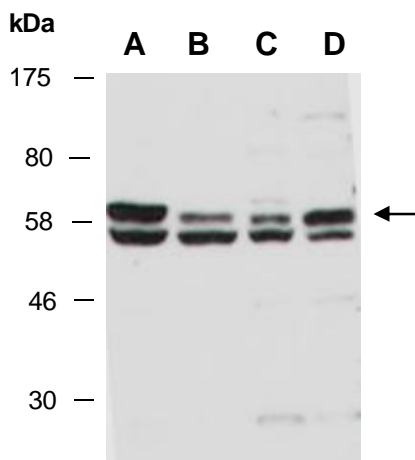
Human, Mouse

### **Tested Applications:**

WB: 1:500-1:2,000 (detect endogenous protein\*)

\*: The apparent protein size on WB may be different from the calculated M.W. due to modifications.

**Product Data:**



**Fig 1.** Western blot of total cell extracts from A) mouse brain, B) mouse thymus, C) human HeLa, D) human Jurkat; using anti-TPP1 (C) (R3227-2) at RT for 2 h.