



Order: (888)-282-5810 (Phone)  
(818)-707-0392 (Fax)  
[order@abiocode.com](mailto:order@abiocode.com)  
Web: [www.Abiocode.com](http://www.Abiocode.com)

---

## **MBNL1 (N) Antibody, Rabbit Polyclonal**

**Cat#:** R3278-1

**Quantity:** 100 ul

**Predicted | Observed M.W.:** 42 kDa

**Lot#:** Refer to vial

**Application:** WB

**Uniprot ID:** Q9NR56

### **Background:**

Muscleblind-like protein 1 (MBNL1) mediates pre-mRNA alternative splicing regulation. MBNL1 acts either as activator or repressor of splicing on specific pre-mRNA targets. MBNL1 inhibits cardiac troponin-T (TNNT2) pre-mRNA exon inclusion but induces insulin receptor (IR) pre-mRNA exon inclusion in muscle. MBNL1 binds to the 5'-YGCU(U/G)Y-3' consensus sequence and the IR RNA. MBNL1 also binds to expanded CUG repeat RNA, which folds into a hairpin structure containing GC base pairs and bulged, unpaired U residues.

### **Other Names:**

Muscleblind-like protein 1, Triplet-expansion RNA-binding protein, EXP, KIAA0428, MBNL

### **Source and Purity:**

Rabbit polyclonal antibodies were produced by immunizing animals with a GST-fusion protein containing the N-terminal region of human MBNL1. Antibodies were purified by affinity purification using immunogen.

### **Storage Buffer and Condition:**

Supplied in 1 x PBS (pH 7.4), 100 ug/ml BSA, 40% Glycerol, 0.01% NaN<sub>3</sub>. Store at -20 °C. Stable for 6 months from date of receipt.

### **Tested Applications:**

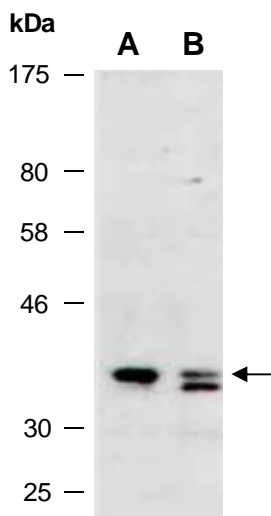
WB: 1:500-1:2,000 (detect endogenous protein\*)

\*: The apparent protein size on WB may be different from the calculated M.W. due to modifications.

### **Species Specificity:**

Human

**Product Data:**



**Fig 1.** Western blot of total cell extracts from A) human HeLa, B) human Jurkat; using anti-MBNL1 (N) (R3278-1) at RT for 2 h.