



Order: (888)-282-5810 (Phone)  
(818)-707-0392 (Fax)  
[order@abiocode.com](mailto:order@abiocode.com)  
Web: [www.Abiocode.com](http://www.Abiocode.com)

---

## **G3BP1 (M) Antibody, Rabbit Polyclonal**

**Cat#:** R3325-2

**Lot#:** Refer to vial

**Quantity:** 100 ul

**Application:** WB

**Predicted | Observed M.W.:** 52 | 58 kDa

**Uniprot ID:** Q13283

### **Background:**

Ras GTPase-activating protein-binding protein 1 (G3BP1) may be a regulated effector of stress granule assembly. G3BP1 is a phosphorylation-dependent sequence-specific endoribonuclease in vitro, and it cleaves exclusively between cytosine and adenine and cleaves MYC mRNA preferentially at the 3'-UTR. G3BP1 is also an ATP- and magnesium-dependent helicase, and it unwinds preferentially partial DNA and RNA duplexes having a 17 bp annealed portion and either a hanging 3' tail or hanging tails at both 5'- and 3'-ends. G3BP1 unwinds DNA/DNA, RNA/DNA, and RNA/RNA substrates with comparable efficiency, and it acts unidirectionally by moving in the 5' to 3' direction along the bound single-stranded DNA.

### **Other Names:**

Ras GTPase-activating protein-binding protein 1, G3BP-1, ATP-dependent DNA helicase VIII, hDH VIII, GAP SH3 domain-binding protein 1, G3BP

### **Source and Purity:**

Rabbit polyclonal antibodies were produced by immunizing animals with a GST-fusion protein containing the middle region of human G3BP1. Antibodies were purified by affinity purification using immunogen.

### **Storage Buffer and Condition:**

Supplied in 1 x PBS (pH 7.4), 100 ug/ml BSA, 40% Glycerol, 0.01% NaN<sub>3</sub>. Store at -20 °C. Stable for 6 months from date of receipt.

### **Species Specificity:**

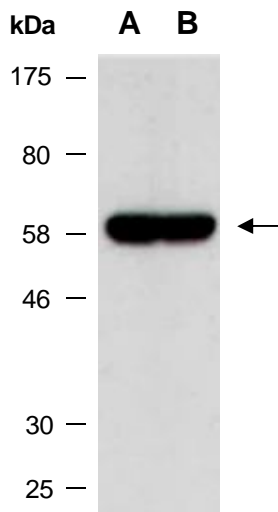
Human

### **Tested Applications:**

WB: 1:500-1:2,000 (detect endogenous protein\*)

\*: The apparent protein size on WB may be different from the calculated M.W. due to modifications.

**Product Data:**



**Fig 1.** Western blot of total cell extracts from A) human HeLa; B) human Jurkat; using anti-G3BP1 (M) (R3325-2) at RT for 2 h.