



Order: (888)-282-5810 (Phone)  
(818)-707-0392 (Fax)  
[order@abiocode.com](mailto:order@abiocode.com)  
Web: [www.Abiocode.com](http://www.Abiocode.com)

---

## **RBM10 (N) Antibody, Rabbit Polyclonal**

**Cat#:** R3329-1

**Quantity:** 100 ul

**Predicted | Observed M.W.:** 104 kDa

**Lot#:** Refer to vial

**Application:** WB

**Uniprot ID:** P98175

### **Background:**

RNA-binding protein 10 (RBM10) may be involved in post-transcriptional processing, most probably in mRNA splicing. RBM10 binds to RNA homopolymers, with a preference for poly(G) and poly(U) and little for poly(A).

### **Other Names:**

RNA-binding protein 10, G patch domain-containing protein 9, RNA-binding motif protein 10, RNA-binding protein S1-1, S1-1, DXS8237E, GPATC9, GPATCH9, KIAA0122

### **Source and Purity:**

Rabbit polyclonal antibodies were produced by immunizing animals with a GST-fusion protein containing the N-terminal region of human RBM10. Antibodies were purified by affinity purification using immunogen.

### **Storage Buffer and Condition:**

Supplied in 1 x PBS (pH 7.4), 100 ug/ml BSA, 40% Glycerol, 0.01% NaN<sub>3</sub>. Store at -20 °C. Stable for 6 months from date of receipt.

### **Species Specificity:**

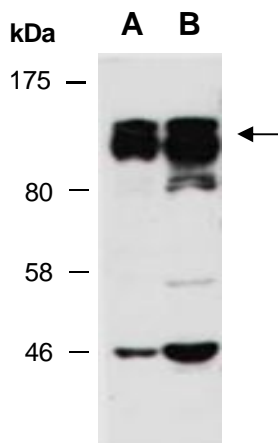
Human

### **Tested Applications:**

WB: 1:500-1:2,000 (detect endogenous protein\*)

\*: The apparent protein size on WB may be different from the calculated M.W. due to modifications.

**Product Data:**



**Fig 1.** Western blot of total cell extracts from A) human HeLa; B) human Jurkat; using anti-RBM10 (N) (R3329-1) at RT for 2 h.