



Order: (888)-282-5810 (Phone)
(818)-707-0392 (Fax)
order@abiocode.com
Web: www.Abiocode.com

EPN2 (N) Antibody, Rabbit Polyclonal

Cat#: R3335-1

Quantity: 100 ul

Predicted | Observed M.W.: 68 kDa

Lot#: Refer to vial

Application: WB

Uniprot ID: O95208

Background:

Epsin-2 (EPN2) plays a role in the formation of clathrin-coated invaginations and endocytosis.

Other Names:

Epsin-2, EPS-15-interacting protein 2

Source and Purity:

Rabbit polyclonal antibodies were produced by immunizing animals with a GST-fusion protein containing the N-terminal region of human EPN2. Antibodies were purified by affinity purification using immunogen.

Storage Buffer and Condition:

Supplied in 1 x PBS (pH 7.4), 100 ug/ml BSA, 40% Glycerol, 0.01% NaN₃. Store at -20 °C. Stable for 6 months from date of receipt.

Species Specificity:

Human

Tested Applications:

WB: 1:500-1:2,000 (detect endogenous protein*)

*: The apparent protein size on WB may be different from the calculated M.W. due to modifications.

Product Data:

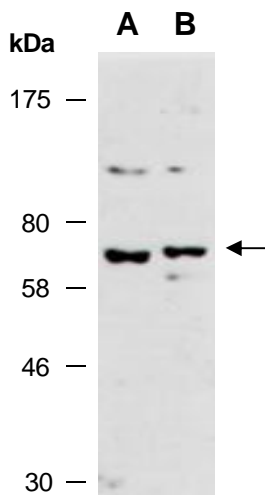


Fig 1. Western blot of total cell extracts from A) human HeLa; B) human Jurkat; using anti-EPN2 (N) (R3335-1) at RT for 2 h.