



Order: (888)-282-5810 (Phone)
(818)-707-0392 (Fax)
order@abiocode.com
Web: www.Abiocode.com

SETX (N) Antibody, Rabbit Polyclonal

Cat#: R3293-1

Quantity: 100 ul

Predicted | Observed M.W.: 303 kDa

Lot#: Refer to vial

Application: WB

Uniprot ID: Q7Z333

Background:

Senataxin (SETX) is a probable helicase involved in RNA maturation. SETX is required for the 3' transcriptional termination of PER1 and CRY2, and it plays an important role in the circadian rhythm regulation. SETX is involved in DNA double-strand breaks damage response generated by oxidative stress.

Other Names:

Probable helicase senataxin , Amyotrophic lateral sclerosis 4 protein, SEN1 homolog, ALS4, KIAA0625, SCAR1

Source and Purity:

Rabbit polyclonal antibodies were produced by immunizing animals with a GST-fusion protein containing the N-terminal region of human SETX. Antibodies were purified by affinity purification using immunogen.

Storage Buffer and Condition:

Supplied in 1 x PBS (pH 7.4), 100 ug/ml BSA, 40% Glycerol, 0.01% NaN₃. Store at -20 °C. Stable for 6 months from date of receipt.

Species Specificity:

Human

Tested Applications:

WB: 1:500-1:2,000 (detect endogenous protein*)

*: The apparent protein size on WB may be different from the calculated M.W. due to modifications.

Product Data:

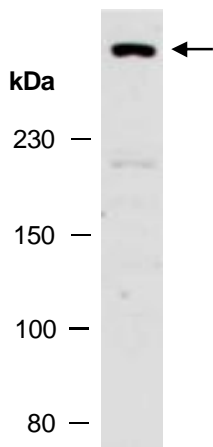


Fig 1. Western blot analysis of total cell extracts from human HeLa; using anti-SETX (N) (R3293-1) at RT for 2 h.