



Order: (888)-282-5810 (Phone)  
(818)-707-0392 (Fax)  
[order@abiocode.com](mailto:order@abiocode.com)  
Web: [www.Abiocode.com](http://www.Abiocode.com)

---

## **NUP133 (C) Antibody, Rabbit Polyclonal**

**Cat#: R3342-2**

**Quantity: 100 ul**

**Predicted | Observed M.W.: 129 kDa**

**Lot#: Refer to vial**

**Application: WB**

**Uniprot ID: Q8WUM0**

### **Background:**

The nuclear envelope creates distinct nuclear and cytoplasmic compartments in eukaryotic cells. It consists of two concentric membranes perforated by nuclear pores, large protein complexes that form aqueous channels to regulate the flow of macromolecules between the nucleus and the cytoplasm. These complexes are composed of at least 100 different polypeptide subunits, many of which belong to the nucleoporin family. The nucleoporin protein NUP133 displays evolutionarily conserved interactions with other nucleoporins. NUP133, which localizes to both sides of the nuclear pore complex at interphase, remains associated with the complex during mitosis and is targeted at early stages to the reforming nuclear envelope. NUP133 also localizes to kinetochores of mitotic cells.

### **Other Names:**

Nuclear pore complex protein Nup133, 133 kDa nucleoporin, Nucleoporin Nup133

### **Source and Purity:**

Rabbit polyclonal antibodies were produced by immunizing animals with a GST-fusion protein containing the C-terminal region of human NUP133. Antibodies were purified by affinity purification using immunogen.

### **Storage Buffer and Condition:**

Supplied in 1 x PBS (pH 7.4), 100 ug/ml BSA, 40% Glycerol, 0.01% NaN<sub>3</sub>. Store at -20 °C. Stable for 6 months from date of receipt.

### **Species Specificity:**

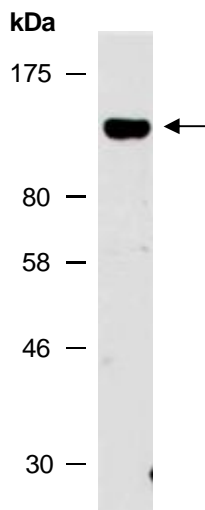
Human

### **Tested Applications:**

WB: 1:500-1:2,000 (detect endogenous protein\*)

\*: The apparent protein size on WB may be different from the calculated M.W. due to modifications.

**Product Data:**



**Fig 1.** Western blot analysis of total cell extracts from human Jurkat; using anti-NUP133 (C) (R3342-2) at RT for 2 h.