



Order: (888)-282-5810 (Phone)  
(818)-707-0392 (Fax)  
[order@abiocode.com](mailto:order@abiocode.com)  
Web: [www.Abiocode.com](http://www.Abiocode.com)

---

## **TET3 (C1) Antibody, Rabbit Polyclonal**

**Cat#: R1092-2a**

**Quantity: 100 ul**

**Predicted | Observed M.W.: 179 | 230 kDa**

**Lot#: Refer to vial**

**Application: WB**

**Uniprot ID: O43151**

### **Background:**

TET3 is a methylcytosine dioxygenase that catalyzes the conversion of methylcytosine (5mC) to 5-hydroxymethylcytosine (5hmC), and may play a role in DNA demethylation. TET3 is a member of the ten-eleven translocation (TET) gene family.

### **Other Names:**

Methylcytosine dioxygenase TET3, KIAA0401

### **Source and Purity:**

Rabbit polyclonal antibodies were produced by immunizing animals with a GST-fusion protein containing the C-terminal region of human TET3. Antibodies were purified by affinity purification using immunogen.

### **Storage Buffer and Condition:**

Supplied in 1 x PBS (pH 7.4), 100 ug/ml BSA, 40% Glycerol, 0.01% NaN<sub>3</sub>. Store at -20 °C. Stable for 6 months from date of receipt.

### **Species Specificity:**

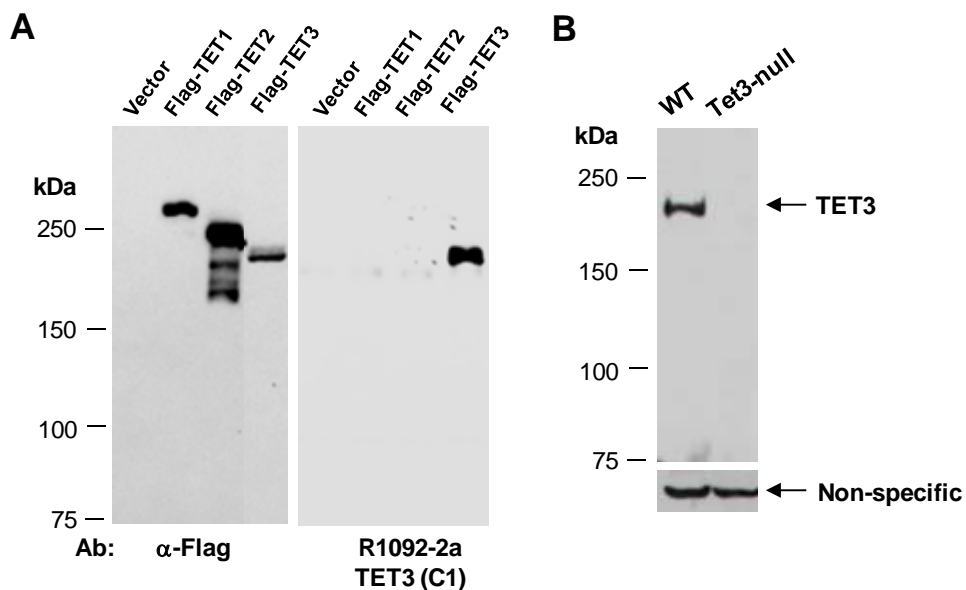
Human, Mouse

### **Tested Applications:**

WB: 1:500-1:2,000 (detect endogenous protein\*)

\*: The apparent protein size on WB may be different from the calculated M.W. due to modifications.

**Product Data:**



**Fig 1. A)** Western blot of total cell extracts from human 293 T cells transfected with the empty vector, or Flag-tagged murine TET1, TET2 or TET3; using indicated Abs at RT for 2 h, indicating that anti-TET3 (C1) (R1092-2a) antibody does not cross-react with TET1 or TET2 under this condition. **B)** Western blot of total cell extracts from wild type (WT) or Tet3-null mouse MSCs, using anti-TET3 (C1) (R1092-2a) at RT for 2 h. The same filter was re-probed with a non-relevant Ab for loading control.