



Order: (888)-282-5810 (Phone)
(818)-707-0392 (Fax)
order@abiocode.com
Web: www.Abiocode.com

CPEB3 (N1) Antibody, Rabbit Polyclonal

Cat#: R3117-1

Quantity: 100 ul

Predicted | Observed M.W.: 76 kDa

Lot#: Refer to vial

Application: WB

Uniprot ID: Q8NE35

Background:

Cytoplasmic polyadenylation element-binding protein 3 (CPEB3) belongs to the family of sequence-specific cytoplasmic polyadenylation element binding proteins, which is composed of CPEB1, CPEB2, CPEB3 and CPEB4, all of which are expressed in the brain. CPEB proteins bind to the 3'-untranslated region (3'-UTR) of mRNA, and plays significant roles in mRNA metabolism and translation regulation. In transfected neurons, CPEB3 represses the translation of a reporter RNA in tethered function assays; in response to NMDA receptor activation, translation is stimulated. In contrast to other CPEBs, CPEB3-mediated translation is unlikely to involve cytoplasmic polyadenylation.

Other Names:

Cytoplasmic polyadenylation element-binding protein 3, CPE-BP3, CPE-binding protein 3, hCPEB-3, KIAA0940

Source and Purity:

Rabbit polyclonal antibodies were produced by immunizing animals with a GST-fusion protein containing the N-terminal region of human CPEB3. Antibodies were purified by affinity purification using immunogen.

Storage Buffer and Condition:

Supplied in 1 x PBS (pH 7.4), 100 ug/ml BSA, 40% Glycerol, 0.01% NaN₃. Store at -20 °C. Stable for 6 months from date of receipt.

Species Specificity:

Human, Mouse

Tested Applications:

WB: 1:500-1:2,000 (detect endogenous protein*)

*: The apparent protein size on WB may be different from the calculated M.W. due to modifications.

Product Data:

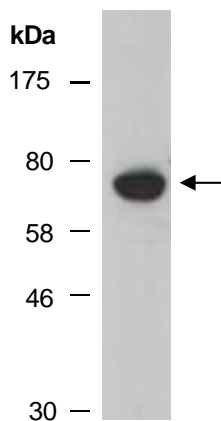


Fig 1. Western blot of total cell extracts from mouse brain; using anti-CPEB3 (N1) (R3117-1) at RT for 2 h.