



Order: (888)-282-5810 (Phone)
(818)-707-0392 (Fax)
order@abiocode.com
Web: www.Abiocode.com

SCN1A (C) Antibody, Rabbit Polyclonal

Cat#: R3196-2

Quantity: 100 ul

Predicted | Observed M.W.: 229 kDa

Lot#: Refer to vial

Application: WB

Uniprot ID: P35498

Background:

The vertebrate sodium channel is a voltage-gated ion channel essential for the generation and propagation of action potentials, mainly in nerve and muscle. Voltage-sensitive sodium channels are heteromeric complexes consisting of a large central pore-forming glycosylated alpha subunit, and two smaller auxiliary beta subunits. Sodium channel protein type 1 subunit alpha (SCN1A) is the large alpha subunit, and mutations in this gene have been associated with several epilepsy, convulsion and migraine disorders.

Other Names:

Sodium channel protein type 1 subunit alpha, Sodium channel protein brain I subunit alpha, Sodium channel protein type I subunit alpha, Voltage-gated sodium channel subunit alpha Nav1.1, NAC1, SCN1, FEB3, GEFSP2, HBSCI, SMEI

Source and Purity:

Rabbit polyclonal antibodies were produced by immunizing animals with a GST-fusion protein containing the C-terminal region of human SCN1A. Antibodies were purified by affinity purification using immunogen.

Storage Buffer and Condition:

Supplied in 1 x PBS (pH 7.4), 100 ug/ml BSA, 40% Glycerol, 0.01% NaN₃. Store at -20 °C. Stable for 6 months from date of receipt.

Species Specificity:

Human, Mouse

Tested Applications:

WB: 1:500-1:2,000 (detect endogenous protein*)

*: The apparent protein size on WB may be different from the calculated M.W. due to modifications.

Product Data:

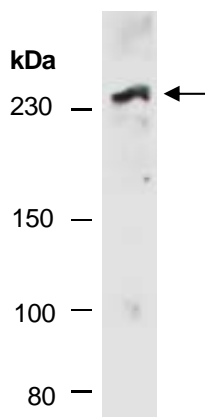


Fig 1. Western blot of total cell extracts from mouse brain; using anti-SCN1A (C) (R3196-2) at RT for 2 h.