



Order: (888)-282-5810 (Phone)
(818)-707-0392 (Fax)
order@abiocode.com
Web: www.Abiocode.com

GOT1 (C) Antibody, Rabbit Polyclonal

Cat#: R3272-2

Quantity: 100 ul

Predicted | Observed M.W.: 46 | 43 kDa

Lot#: Refer to vial

Application: WB

Uniprot ID: P17174

Background:

Glutamate oxaloacetate transaminase 1 (GOT1) mediated the biosynthesis of L-glutamate from L-aspartate or L-cysteine. GOT1 is an important regulator of levels of glutamate, the major excitatory neurotransmitter of the vertebrate central nervous system. GOT1 acts as a scavenger of glutamate in brain neuroprotection. The aspartate aminotransferase activity is involved in hepatic glucose synthesis during development and in adipocyte glyceroneogenesis. Using L-cysteine as substrate, GOT1 also regulates levels of mercaptopyruvate, an important source of hydrogen sulfide.

Other Names:

Aspartate aminotransferase, cytoplasmic; cAspAT; Cysteine aminotransferase, cytoplasmic; Cysteine transaminase, cytoplasmic; cCAT; Glutamate oxaloacetate transaminase 1; Transaminase A

Source and Purity:

Rabbit polyclonal antibodies were produced by immunizing animals with a GST-fusion protein containing the C-terminal region of human GOT1. Antibodies were purified by affinity purification using immunogen.

Storage Buffer and Condition:

Supplied in 1 x PBS (pH 7.4), 100 ug/ml BSA, 40% Glycerol, 0.01% NaN₃. Store at -20 °C. Stable for 6 months from date of receipt.

Species Specificity:

Human, Mouse

Tested Applications:

WB: 1:500-1:2,000 (detect endogenous protein*)

*: The apparent protein size on WB may be different from the calculated M.W. due to modifications.

Product Data:

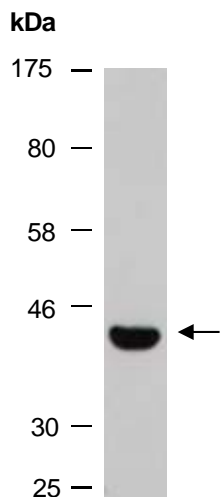


Fig 1. Western blot of total cell extracts from mouse brain; using anti-GOT1 (C) (R3272-2) at RT for 2 h.