



Order: (888)-282-5810 (Phone)  
(818)-707-0392 (Fax)  
[order@abiocode.com](mailto:order@abiocode.com)  
Web: [www.Abiocode.com](http://www.Abiocode.com)

---

## LIS1 (N) Antibody, Rabbit Polyclonal

**Cat#: R3303-1**

**Quantity: 100 ul**

**Predicted | Observed M.W.: 47 kDa**

**Lot#: Refer to vial**

**Application: WB**

**Uniprot ID: P43034**

### **Background:**

Lissencephaly-1 protein (LIS1) is the non-catalytic alpha subunit of the intracellular Ib isoform of platelet-activating factor acetylhydrolase, a heterotrimeric enzyme that specifically catalyzes the removal of the acetyl group at the SN-2 position of platelet-activating factor (identified as 1-O-alkyl-2-acetyl-sn-glycerol-3-phosphorylcholine). Two other isoforms of intracellular platelet-activating factor acetylhydrolase exist: one composed of multiple subunits, the other, a single subunit. In addition, a single-subunit isoform of this enzyme is found in serum. When the LIS1 gene is mutated or lost, it causes the lissencephaly associated with Miller-Dieker lissencephaly syndrome.

### **Other Names:**

Platelet-activating factor acetylhydrolase IB subunit alpha, Lissencephaly-1 protein, LIS-1, PAF acetylhydrolase 45 kDa subunit, PAF-AH 45 kDa subunit, PAF-AH alpha, PAFAH alpha, MDCR, MDS, PAFAHA, PAFAH1B1

### **Source and Purity:**

Rabbit polyclonal antibodies were produced by immunizing animals with a GST-fusion protein containing the N-terminal region of human LIS1. Antibodies were purified by affinity purification using immunogen.

### **Storage Buffer and Condition:**

Supplied in 1 x PBS (pH 7.4), 100 ug/ml BSA, 40% Glycerol, 0.01% NaN<sub>3</sub>. Store at -20 °C. Stable for 6 months from date of receipt.

### **Species Specificity:**

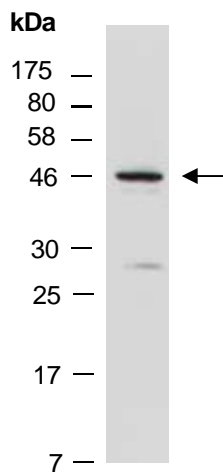
Human, Mouse

### **Tested Applications:**

WB: 1:500-1:2,000 (detect endogenous protein\*)

\*: The apparent protein size on WB may be different from the calculated M.W. due to modifications.

**Product Data:**



**Fig 1.** Western blot of total cell extracts from mouse brain; using anti-LIS1 (N) (R3303-1) at RT for 2 h.