



Order: (888)-282-5810 (Phone)
(818)-707-0392 (Fax)
order@abiocode.com
Web: www.Abiocode.com

PIRB (C2) Antibody, Rabbit Polyclonal

Cat#: R3338-2

Quantity: 100 ul

Predicted | Observed M.W.: 93 | 120 kDa

Lot#: Refer to vial

Application: WB

Uniprot ID: P97484

Background:

Paired immunoglobulin-like receptor B (PIRB) may act as a receptor for class I MHC antigens. PIRB becomes activated upon coligation of LILRB3 and immune receptors, such as FCGR2B and the B-cell receptor. PIRB down-regulates antigen-induced B-cell activation by recruiting phosphatases to its immunoreceptor tyrosine-based inhibitor motifs (ITIM).

Other Names:

Leukocyte immunoglobulin-like receptor subfamily B member 3, LIR-3, Leukocyte immunoglobulin-like receptor 3, Cell-surface glycoprotein p91, Paired immunoglobulin-like receptor B, PIR-B, Liltrb3

Source and Purity:

Rabbit polyclonal antibodies were produced by immunizing animals with a GST-fusion protein containing the C-terminal region of mouse PIRB. Antibodies were purified by affinity purification using immunogen.

Storage Buffer and Condition:

Supplied in 1 x PBS (pH 7.4), 100 ug/ml BSA, 40% Glycerol, 0.01% NaN₃. Store at -20 °C. Stable for 6 months from date of receipt.

Species Specificity:

Mouse

Tested Applications:

WB: 1:500-1:2,000 (detect endogenous protein*)

*: The apparent protein size on WB may be different from the calculated M.W. due to modifications.

Product Data:

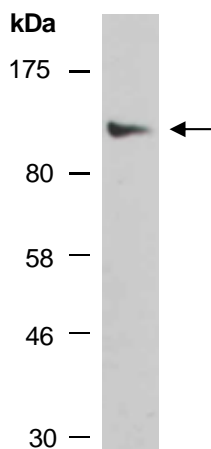


Fig 1. Western blot of total cell extracts from mouse brain; using anti-PIRB (C2) (R3338-2) at RT for 2 h.