



Order: (888)-282-5810 (Phone)  
(818)-707-0392 (Fax)  
[order@abiocode.com](mailto:order@abiocode.com)  
Web: [www.Abiocode.com](http://www.Abiocode.com)

---

## **CNPASE (N) Antibody, Mouse Monoclonal**

**Cat#: M0014-1a**

**Quantity: 100 ul**

**Predicted M.W.: 47 kDa**

**Isotype: IgG1**

**Lot#: Refer to vial**

**Application: WB**

**Uniprot ID: P16330**

### **Background:**

2', 3'-cyclic-nucleotide 3'-phosphodiesterase (CNPASE) belongs to the cyclic nucleotide phosphodiesterase family. It can catalyze the in vitro hydrolysis of nucleoside 2', 3'-cyclic phosphate to nucleoside 2'-phosphate. CNPASE is firmly bound to membrane structures of brain white matter. High CNPASE expression is observed in oligodendrocytes and Schwann cells as CNPase accounts for roughly 4% of the total myelin protein in the central nervous system

### **Other Names:**

2',3'-cyclic-nucleotide 3'-phosphodiesterase, CNP, CNP1

### **Source and Purity:**

Rabbit polyclonal antibodies were produced by immunizing animals with a GST-fusion protein containing the N-terminal region of mouse CNPASE. Antibodies were purified by Caprylic Acid-Ammonium Sulfate precipitation.

### **Storage Buffer and Condition:**

Supplied in 1 x PBS (pH 7.4), 40% Glycerol, 0.02% Thimerosal. Store at -20 °C. Stable for 6 months from date of receipt.

### **Species Specificity:**

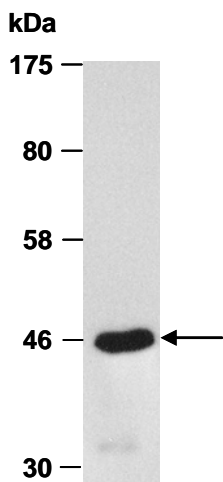
Mouse

### **Recommended Conditions:**

WB: 1:1,000-1:5,000 (detect endogenous protein\*)

\*: The apparent protein size on WB may be different from the calculated M.W. due to modifications.

**Product Data:**



**Fig 1.** Western blot of total cell extracts from mouse brain, using Ab (M0014-1a) at RT for 2 h.