



Order: (888)-282-5810 (Phone)  
(818)-707-0392 (Fax)  
[order@abiocode.com](mailto:order@abiocode.com)  
Web: [www.Abiocode.com](http://www.Abiocode.com)

---

## PHYB (C1) Antibody, Rabbit Polyclonal

**Cat#:** R1244-2

**Lot#:** Refer to vial

**Quantity:** 100 ul

**Application:** WB

**Predicted I Observed M.W.:** 129 kDa

**Uniprot ID:** P14713

### **Background:**

Phytochrome B (PHYB) is a regulatory photoreceptor, which exists in two forms that are reversibly interconvertible by light: the Pr form that absorbs maximally in the red region of the spectrum and the Pfr form that absorbs maximally in the far-red region. Photoconversion of Pr to Pfr induces an array of morphogenetic responses, whereas reconversion of Pfr to Pr cancels the induction of those responses. Pfr controls the expression of a number of nuclear genes including those encoding the small subunit of ribulose-bisphosphate carboxylase, chlorophyll A/B binding protein, protochlorophyllide reductase, rRNA, etc. It also controls the expression of its own gene(s) in a negative feedback fashion. PHYA is involved in the flowering time regulation.

### **Other Names:**

Phytochrome B, HY3

### **Source and Purity:**

Rabbit polyclonal antibodies were produced by immunizing animals with a GST-fusion protein containing the C-terminal region of *arabidopsis thaliana* PHYB (At2g18790). Antibodies were purified by affinity purification using immunogen.

### **Storage Buffer and Condition:**

Supplied in 1 x PBS (pH 7.4), 100 ug/ml BSA, 40% Glycerol, 0.01% NaN<sub>3</sub>. Store at -20 °C. Stable for 6 months from date of receipt.

### **Species Specificity:**

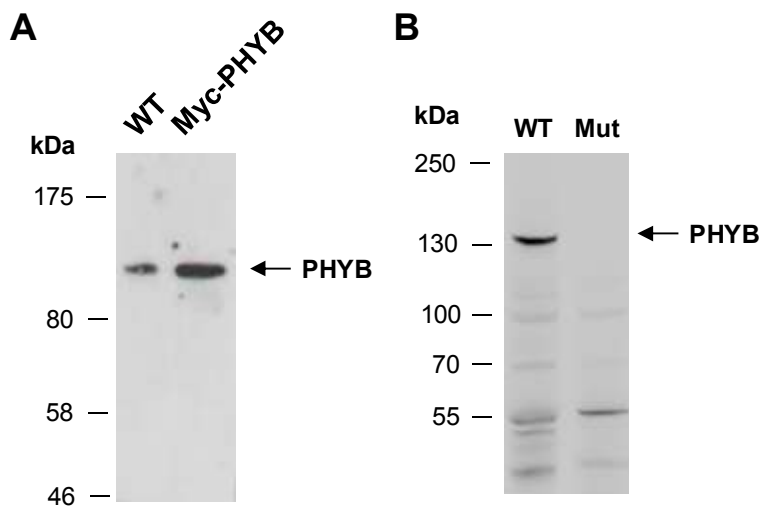
*Arabidopsis thaliana*

### **Tested Applications:**

WB: 1:500-1:2,000 (detect endogenous protein\*)

\*: The apparent protein size on WB may be different from the calculated M.W. due to modifications.

**Product Data:**



**Fig 1. A)** Western blot analysis of total protein extracts from wild type (WT) or Myc-tagged PHYB overexpressing (Myc-PHYB) arabidopsis leaves, using anti-PHYB (C1) (R1244-2) at RT for 2 h. **B)** Same as in A except that protein extracts(100ug) were prepared from 4 day-old, dark-grown WT or phyB-5 null mutant (Mut) arabidopsis seedlings, using the same Ab at 1:1000 dilution at 4<sup>o</sup>C overnight (data in B provided by W. Hu, UC Davis).