



Order: (888)-282-5810 (Phone)  
(818)-707-0392 (Fax)  
[order@abiocode.com](mailto:order@abiocode.com)  
Web: [www.Abiocode.com](http://www.Abiocode.com)

---

## EDS1 (C) Antibody, Rabbit Polyclonal

**Cat#:** R3397-3

**Quantity:** 100 ul

**Predicted | Observed M.W.:** 72 kDa

**Lot#:** Refer to vial

**Application:** WB

**Uniprot ID:** Q9SU72

### **Background:**

EDS1 is a component of R gene-mediated disease resistance in *Arabidopsis thaliana* with homology to eukaryotic lipases.

### **Other Names:**

Enhanced disease susceptibility 1, Putative disease resistance protein EDS1, Putative uncharacterized protein T17F15.40, T17F15.40, At3g48090, ATEDS1

### **Source and Purity:**

Rabbit polyclonal antibodies were produced by immunizing animals with a GST-fusion protein containing the C-terminal region of *arabidopsis thaliana* EDS1 (AT3G48090). Antibodies were purified by affinity purification using immunogen.

### **Storage Buffer and Condition:**

Supplied in 1 x PBS (pH 7.4), 100 ug/ml BSA, 40% Glycerol, 0.01% NaN<sub>3</sub>. Store at -20 °C. Stable for 6 months from date of receipt.

### **Species Specificity:**

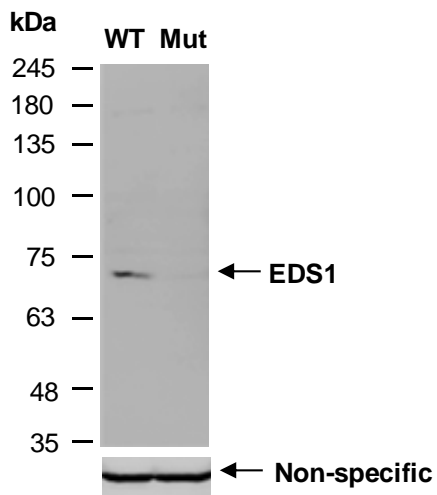
*Arabidopsis thaliana*

### **Tested Applications:**

WB: 1:500-1:2,000 (detect endogenous protein\*)

\*: The apparent protein size on WB may be different from the calculated M.W. due to modifications.

**Product Data:**



**Fig 1.** Western blot analysis of equal amounts of protein extracts from wild type (WT) or EDS1-deficient mutant (Mut) Arabidopsis leaves; using anti-EDS1 (C) (R3397-3) at RT for 2 h..