



Order: (888)-282-5810 (Phone)
(818)-707-0392 (Fax)
order@abiocode.com
Web: www.Abiocode.com

KLF2 (N) Antibody, Rabbit Polyclonal

Cat#: R2193-1

Quantity: 100 ul

Predicted | Observed M.W.: 37 | 42 kDa

Lot#: Refer to vial

Application: WB

Uniprot ID: Q9Y5W3

Background:

Kruppel-like factors (KLFs) are a family of broadly expressed zinc finger transcription factors. KLF2 regulates T-cell trafficking by promoting expression of the lipid-binding receptor S1P1 and the selectin CD62L. KLF2 also binds to the CACCC box in the beta-globin gene promoter and activates its transcription.

Other Names:

Krueppel-like factor 2, Lung krueppel-like factor, LKLF

Source and Purity:

Rabbit polyclonal antibodies were produced by immunizing animals with a GST-fusion protein containing the N-terminal region of human KLF2. Antibodies were purified by affinity purification using immunogen.

Storage Buffer and Condition:

Supplied in 1 x PBS (pH 7.4), 100 ug/ml BSA, 40% Glycerol, 0.01% NaN₃. Store at -20 °C. Stable for 6 months from date of receipt.

Species Specificity:

Human, Mouse

Tested Applications:

WB: 1:1,000-1:3,000 (detect endogenous protein*)

*: The apparent protein size on WB may be different from the calculated M.W. due to modifications.

Product Data:

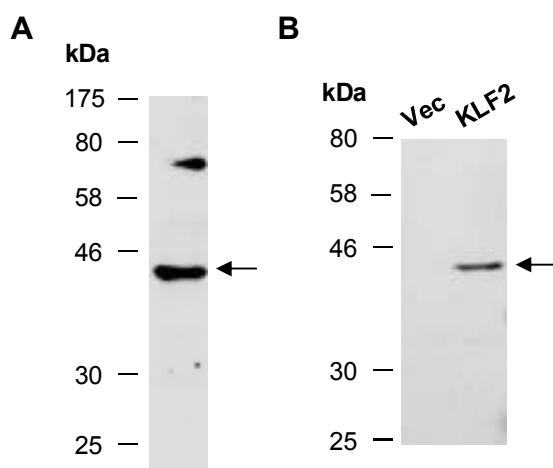


Fig 1. A) Western blot of total cell extracts from mouse brain; using anti-KLF2 (N) (R2193-1) at RT for 2 h. **B)** Same as in A except that protein extracts from human 293T cell transfected with a vector control (Vec) or a construct expressing human KLF2 (KLF2) were used.