



Order: (888)-282-5810 (Phone)
(818)-707-0392 (Fax)
order@abiocode.com
Web: www.Abiocode.com

BES1 (C) Antibody, Rabbit Polyclonal

Cat#: R3489-2

Quantity: 100 ul

Predicted | Observed M.W.: 36 | 36, 53, 90 kDa

Lot#: Refer to vial

Application: WB

Uniprot ID: Q9LN63

Background:

BRI1-EMS-SUPPRESSOR1 (BES1) is a brassinosteroid (BR) signalling protein that accumulates in the nucleus as dephosphorylated form in response to BRs. BES1 is phosphorylated by the BIN2 GSK3 kinase. It synergistically interacts with BIM1 to bind to E box sequences (CANNTG). The BES1 protein contains a nuclear localization signal (NLS), followed by a highly conserved amino-terminal domain (N) shared by all family members, a BIN2 phosphorylation domain (P), a PEST motif involved in protein degradation in the absence of BR, and a carboxyl-terminal domain. BES1 can interact with the ELF6 and REF6 Jumonji N/C-domain containing proteins and may direct them to modify histone methylation upstream of some brassinosteroid responsive-genes.

Other Names:

BRASSINAZOLE-RESISTANT 2, BRI1-EMS-SUPPRESSOR1, BZR2, Protein 107, Protein BIN2 SUBSTRATE 1, At1g19350, F18O14_4, BIS1

Source and Purity:

Rabbit polyclonal antibodies were produced by immunizing animals with a GST-fusion protein containing the C-terminal region of *arabidopsis thaliana* BES1 (AT1G19350). Antibodies were purified by affinity purification using immunogen.

Storage Buffer and Condition:

Supplied in 1 x PBS (pH 7.4), 100 ug/ml BSA, 40% Glycerol, 0.01% NaN₃. Store at -20 °C. Stable for 6 months from date of receipt.

Species Specificity:

Arabidopsis thaliana

Tested Applications:

WB: 1:500-1:2,000 (detect endogenous protein*)

*: The apparent protein size on WB may be different from the calculated M.W. due to modifications.

Product Data:

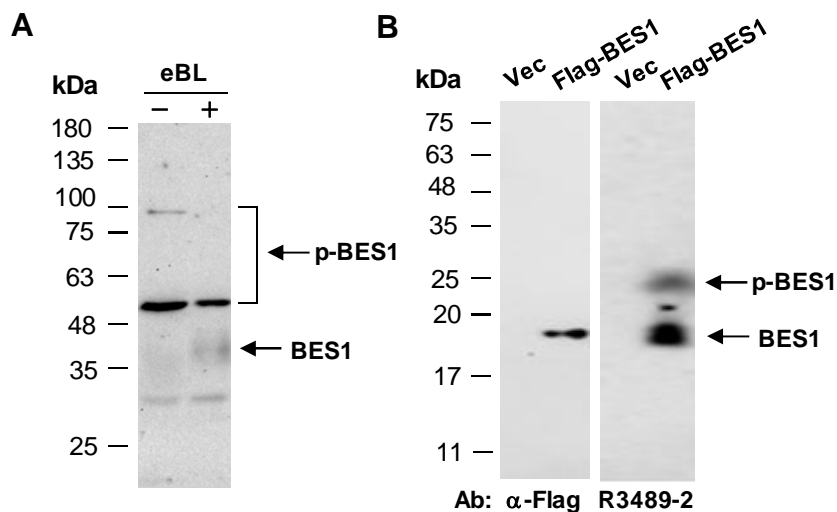


Fig 1. A) Western blot of total protein extracts from arabidopsis leaves untreated (-) or treated (+) with 10 μ M epi-brassinolide (eBL) for 1 h, using anti-BES1 (C) (R3489-2) at RT for 2 h. BES1 is known to be dephosphorylated upon BL treatment (Yin et al., 2002, Cell 109:181-191). p-BES1, phosphorylated BES1. **B)** Western blot of protein extracts from human 293T cell transfected with a vector control (Vec) or Flag-BES1 encoding a.a. 263-399 of BES1 (AT1G19350), using indicated Abs at RT for 2 h. The 26 kD band in the right panel may represent the phosphorylated BES1 (p-BES1).