



Order: (888)-282-5810 (Phone)
(818)-707-0392 (Fax)
order@abiocode.com
Web: www.Abiocode.com

Tubulin A (N) Antibody, Rabbit Polyclonal

Cat#: R0267-1a

Quantity: 100 ul

Predicted | Observed M.W.: 49 kDa

Lot#: Refer to vial

Application: WB

Uniprot ID: P11139

Background:

Microtubules of the eukaryotic cytoskeleton perform essential and diverse functions and are composed of a heterodimer of alpha (Tubulin A) and beta (Tubulin B) tubulins. The genes encoding these microtubule constituents belong to the tubulin superfamily, which is composed of six distinct families. Genes from the alpha, beta and gamma tubulin families are found in all eukaryotes. The alpha and beta tubulins represent the major components of microtubules, while gamma tubulin plays a critical role in the nucleation of microtubule assembly. There are multiple alpha and beta tubulin genes, which are highly conserved among species.

Other Names:

Tubulin alpha-1 chain, TUA1, TUBA1, Tubulin A

Source and Purity:

Rabbit polyclonal antibodies were produced by immunizing animals with a GST-fusion protein containing the N-terminal region of Arabidopsis Tubulin A1 (At1g64740). The identical regions are also present in Arabidopsis Tubulin A3, 4, 6; as well as human and mouse Tubulin A1. Antibodies were purified by affinity purification using immunogen.

Storage Buffer and Condition:

Supplied in 1 x PBS (pH 7.4), 100 ug/ml BSA, 40% Glycerol, 0.01% NaN₃. Store at -20 °C. Stable for 6 months from date of receipt.

Species Specificity:

Human, Mouse, Arabidopsis, Oryza sativa (Rice)

Tested Applications:

WB: 1:1,000-1:3,000 (detect endogenous protein*)

*: The apparent protein size on WB may be different from the calculated M.W. due to modifications.

Product Data:

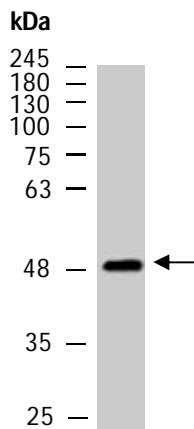


Fig 1. Western blot of total cell extracts from WT *arabidopsis*, using anti-Tubulin A (N) (R0267-1a) at RT for 2 h.