



Order: (888)-282-5810 (Phone)
(818)-707-0392 (Fax)
order@abiocode.com
Web: www.Abiocode.com

BECN2 (N2) Antibody, Rabbit Polyclonal

Cat#: R3300-2

Quantity: 100 ul

Predicted | Observed M.W.: 48 | 60 kDa

Lot#: Refer to vial

Application: WB

Uniprot ID: A8MW95

Background:

Beclin-2 (BECN2) is involved in 2 distinct lysosomal degradation pathways: acts as a regulator of autophagy and as a regulator of G-protein coupled receptors turnover. BECN2 regulates degradation in lysosomes of a variety of G-protein coupled receptors via its interaction with GPRASP1/GASP1.

Other Names:

Beclin-2, Beclin-1 autophagy-related pseudogene 1, Beclin-1-like protein 1, BECN1L1, BECN1P1

Source and Purity:

Rabbit polyclonal antibodies were produced by immunizing animals with a GST-fusion protein containing the N-terminal region of human BECN2. Antibodies were purified by affinity purification using immunogen.

Storage Buffer and Condition:

Supplied in 1 x PBS (pH 7.4), 100 ug/ml BSA, 40% Glycerol, 0.01% NaN₃. Store at -20 °C. Stable for 6 months from date of receipt.

Species Specificity:

Human, Mouse

Tested Applications:

WB: 1:500-1:2,000 (detect endogenous protein*)

*: The apparent protein size on WB may be different from the calculated M.W. due to modifications.

Product Data:

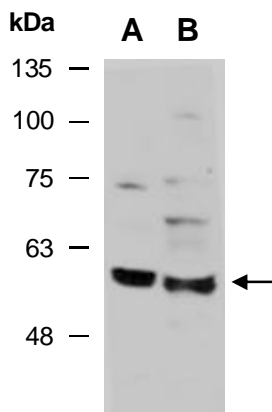


Fig 1. Western blot of total cell extracts from A) mouse brain, B) mouse thymus; using anti-BECN2 (N2) (R3300-2) at RT for 2 h.