



Order: (888)-282-5810 (Phone)
(818)-707-0392 (Fax)
order@abiocode.com
Web: www.Abiocode.com

LDB1 (N2) Antibody, Rabbit Polyclonal

Cat#: R3269-2

Quantity: 100 ul

Predicted | Observed M.W.: 47 | 54 kDa

Lot#: Refer to vial

Application: WB

Uniprot ID: Q86U70

Background:

LIM domain binding 1 (LDB1) binds to the LIM domain of a wide variety of LIM domain-containing transcription factors. LDB1 may regulate the transcriptional activity of LIM-containing proteins by determining specific partner interactions. LDB1 plays a role in the development of interneurons and motor neurons in cooperation with LHX3 and ISL1. LDB1 acts synergistically with LHX1/LIM1 in axis formation and activation of gene expression. LDB1 also acts with LMO2 in the regulation of red blood cell development, maintaining erythroid precursors in an immature state.

Other Names:

LIM domain binding 1, CLIM2, NLI, LDB-1, Carboxyl-terminal LIM domain-binding protein 2, CLIM-2, LIM domain-binding factor CLIM2, hLdb1, Nuclear LIM interactor

Source and Purity:

Rabbit polyclonal antibodies were produced by immunizing animals with a GST-fusion protein containing the N-terminal region of human LDB1. Antibodies were purified by affinity purification using immunogen.

Storage Buffer and Condition:

Supplied in 1 x PBS (pH 7.4), 100 ug/ml BSA, 40% Glycerol, 0.01% NaN₃. Store at -20 °C. Stable for 6 months from date of receipt.

Species Specificity:

Human

Tested Applications:

WB: 1:500-1:2,000 (detect endogenous protein*)

*: The apparent protein size on WB may be different from the calculated M.W. due to modifications.

Product Data:

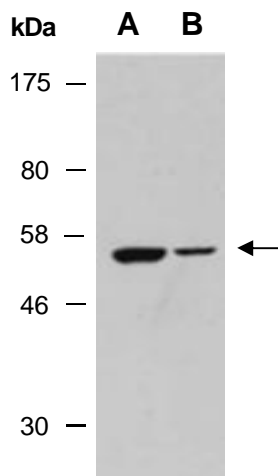


Fig 1. Western blot of total cell extracts from A) human HeLa; B) human 293T, using anti-LDB1 (N2) (R3269-2) at RT for 2 h.