



Order: (888)-282-5810 (Phone)
(818)-707-0392 (Fax)
order@abiocode.com
Web: www.Abiocode.com

SELE (M) Antibody, Rabbit Polyclonal

Cat#: R1093-1

Quantity: 100 ul

Predicted | Observed MW: 67 kDa

Lot#: Refer to vial

Application: WB

Uniprot ID: P16581

Background:

E-selectin (SELE) is a single-pass type I membrane protein belonging to the selectin/LECAM family. SELE is a cell-surface glycoprotein having a role in immunoadhesion. SELE mediates in the adhesion of blood neutrophils in cytokine-activated endothelium through interaction with PSGL1/SELPLG, and it may have a role in capillary morphogenesis.

Other Names:

E-selectin, CD62 antigen-like family member E, ELAM1, Endothelial leukocyte adhesion molecule 1, ELAM-1, Leukocyte-endothelial cell adhesion molecule 2, LECAM2, CD62E

Source and Purity:

Rabbit polyclonal antibodies were produced by immunizing animals with a GST-fusion protein containing the middle region of human SELE. Antibodies were purified by affinity purification using immunogen.

Storage Buffer and Condition:

Supplied in 1 x PBS (pH 7.4), 100 ug/ml BSA, 40% Glycerol, 0.01% NaN₃. Store at -20 °C. Stable for 6 months from date of receipt.

Species Specificity:

Human

Tested Applications:

WB: 1:500-1:2,000 (detect endogenous protein*)

*: The apparent protein size on WB may be different from the calculated M.W. due to modifications.

Product Data:

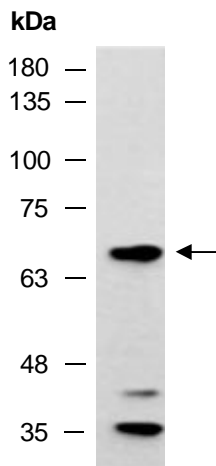


Fig 1. Western blot of total cell extracts from human Namalwa, using anti-SELE (M) (R1093-1) at RT for 2 h.