



Order: (888)-282-5810 (Phone)
(818)-707-0392 (Fax)
order@abiocode.com
Web: www.Abiocode.com

ROBO3 (C2) Antibody, Rabbit Polyclonal

Cat#: R1061-3

Quantity: 100 ul

Predicted | Observed MW: 148 kDa

Lot#: Refer to vial

Application: WB

Uniprot ID: Q96MS0

Background:

Roundabout homolog 3 (ROBO3) is a single-pass type I membrane protein belonging to the immunoglobulin superfamily and the ROBO family. ROBO3 is thought to be involved during neural development in axonal navigation at the ventral midline of the neural tube. In spinal chord development, ROBO3 plays a role in guiding commissural axons probably by preventing premature sensitivity to Slit proteins thus inhibiting Slit signaling through ROBO1. ROBO3 is required for hindbrain axon midline crossing.

Other Names:

Roundabout homolog 3, Roundabout-like protein 3

Source and Purity:

Rabbit polyclonal antibodies were produced by immunizing animals with a GST-fusion protein containing the C-terminal region of human ROBO3. Antibodies were purified by affinity purification using immunogen.

Storage Buffer and Condition:

Supplied in 1 x PBS (pH 7.4), 100 ug/ml BSA, 40% Glycerol, 0.01% NaN₃. Store at -20 °C. Stable for 6 months from date of receipt.

Species Specificity:

Human, Mouse

Tested Applications:

WB: 1:500-1:2,000 (detect endogenous protein*)

*: The apparent protein size on WB may be different from the calculated M.W. due to modifications.

Product Data:

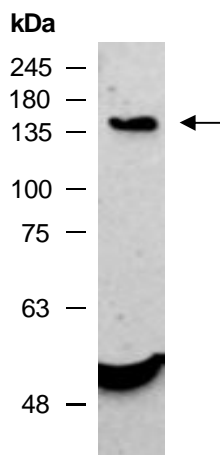


Fig 1. Western blot of total protein extracts from mouse brain, using anti-ROBO3 (C2) (R1061-3) at RT for 2 h.