



Order: (888)-282-5810 (Phone)  
(818)-707-0392 (Fax)  
[order@abiocode.com](mailto:order@abiocode.com)  
Web: [www.Abiocode.com](http://www.Abiocode.com)

---

## **KDM5D (C1) Antibody, Rabbit Polyclonal**

**Cat#: R0917-1**

**Quantity: 100 ul**

**Predicted | Observed MW: 174 | 200 kDa**

**Lot#: Refer to vial**

**Application: WB**

**Uniprot ID: Q9BY66**

### **Background:**

Lysine-specific demethylase 5D (KDM5D) belongs to the JARID1 histone demethylase family. KDM5D is a histone demethylase that specifically demethylates 'Lys-4' of histone H3, thereby playing a central role in histone code. KDM5D does not demethylate histone H3 'Lys-9', H3 'Lys-27', H3 'Lys-36', H3 'Lys-79' or H4 'Lys-20'. KDM5D demethylates trimethylated and dimethylated but not monomethylated H3 'Lys-4' and may play a role in spermatogenesis.

### **Other Names:**

Lysine-specific demethylase 5D, Histocompatibility Y antigen, H-Y, Histone demethylase JARID1D, Jumonji/ARID domain-containing protein 1D, Protein SmcY, HY, HYA, JARID1D, KIAA0234, SMCY

### **Source and Purity:**

Rabbit polyclonal antibodies were produced by immunizing animals with a GST-fusion protein containing the C-terminal region of human KDM5D. Antibodies were purified by affinity purification using immunogen.

### **Storage Buffer and Condition:**

Supplied in 1 x PBS (pH 7.4), 100 ug/ml BSA, 40% Glycerol, 0.01% NaN<sub>3</sub>. Store at -20 °C. Stable for 6 months from date of receipt.

### **Species Specificity:**

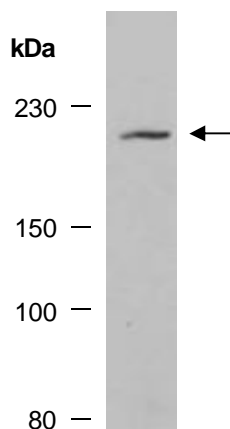
Human, Mouse

### **Tested Applications:**

WB: 1:500-1:2,000 (detect endogenous protein\*)

\*: The apparent protein size on WB may be different from the calculated M.W. due to modifications.

**Product Data:**



**Fig 1.** Western blot of total protein extracts from mouse thymus, using anti-KDM5D (C1) (R0917-1) at RT for 2 h.