



Order: (888)-282-5810 (Phone)
(818)-707-0392 (Fax)
order@abiocode.com
Web: www.Abiocode.com

SETDB2 (N) Antibody, Rabbit Polyclonal

Cat#: R0803-1

Quantity: 100 ul

Predicted | Observed M.W.: 82 kDa

Lot#: Refer to vial

Application: WB

Uniprot ID: Q96T68

Background:

Histone-lysine N-methyltransferase SETDB2 belongs to the histone-lysine methyltransferase family. SETDB2 is a histone methyltransferase involved in left-right axis specification in early development and mitosis. SETDB2 specifically trimethylates 'Lys-9' of histone H3 (H3K9me3). SETDB2 contributes to H3K9me3 in both the interspersed repetitive elements and centromere-associated repeats. Additionally, SETDB2 plays a role in chromosome condensation and segregation during mitosis.

Other Names:

Histone-lysine N-methyltransferase SETDB2, Chronic lymphocytic leukemia deletion region gene 8 protein, Lysine N-methyltransferase 1F, SET domain bifurcated 2, C13orf4, CLLD8, KMT1F

Source and Purity:

Rabbit polyclonal antibodies were produced by immunizing animals with a GST-fusion protein containing the N-terminal region of human SETDB2. Antibodies were purified by affinity purification using immunogen.

Storage Buffer and Condition:

Supplied in 1 x PBS (pH 7.4), 100 ug/ml BSA, 40% Glycerol, 0.01% NaN₃. Store at -20 °C. Stable for 6 months from date of receipt.

Species Specificity:

Human

Tested Applications:

WB: 1:500-1:2,000 (detect endogenous protein*)

*: The apparent protein size on WB may be different from the calculated M.W. due to modifications.

Product Data:

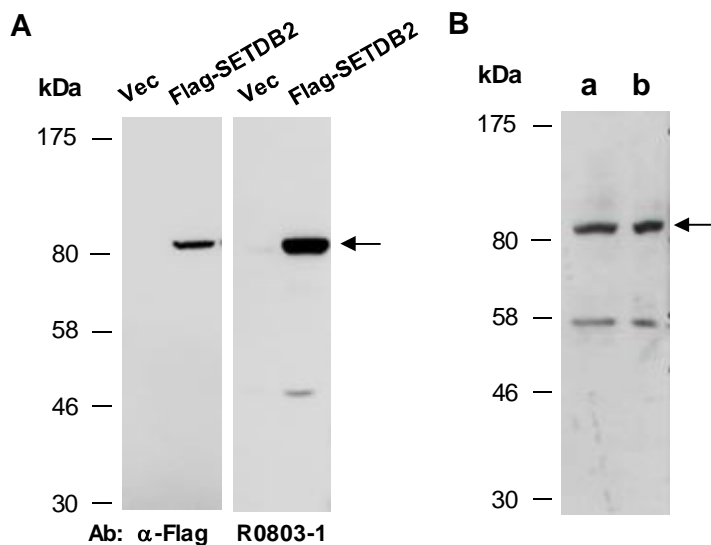


Fig 1. A) Western blot of protein extracts from human 293T cells transfected with the vector control (Vec) or Flag-tagged human SETDB2, using indicated Abs at RT for 2 h. **B)** Western blot of total cell extracts from a. human HeLa, b. human Jurkat; using anti-SETDB2 (N) (R0803-1) at RT for 2 h.