



Order: (888)-282-5810 (Phone)  
(818)-707-0392 (Fax)  
[order@abiocode.com](mailto:order@abiocode.com)  
Web: [www.Abiocode.com](http://www.Abiocode.com)

---

## **APOBEC3g (M2) Antibody, Rabbit Polyclonal**

**Cat#: R0873-2**

**Quantity: 100 ul**

**Predicted | Observed MW: 46 kDa**

**Lot#: Refer to vial**

**Application: WB**

**Uniprot ID: Q9HC16**

### **Background:**

DNA dC->dU-editing enzyme APOBEC-3g (APOBEC3g) belongs to the cytidine and deoxycytidylate deaminase family. It is a DNA deaminase (cytidine deaminase) that mediates a form of innate resistance to retroviral infections (at least to HIV-1 infection) by triggering G-to-A hypermutation in the newly synthesized viral DNA. The inhibition of viral replication is either due to the degradation of the minus strand before its integration or to the lethality of the hypermutations. APOBEC3G also inhibits the infectivity of retroviral particles only distantly related to HIV-1, such as the simian immunodeficiency virus (SIV), the equine infectious anemia virus (EIAV) and the murine leukemia virus (MLV).

### **Other Names:**

DNA dC->dU-editing enzyme APOBEC-3G, APOBEC-related cytidine deaminase, APOBEC-related protein, ARCD, APOBEC-related protein 9, ARP-9, CEM-15, CEM15

### **Source and Purity:**

Rabbit polyclonal antibodies were produced by immunizing animals with a GST-fusion protein containing the middle region of human APOBEC3g. Antibodies were purified by affinity purification using immunogen.

### **Storage Buffer and Condition:**

Supplied in 1 x PBS (pH 7.4), 100 ug/ml BSA, 40% Glycerol, 0.01% NaN<sub>3</sub>. Store at -20 °C. Stable for 6 months from date of receipt.

### **Species Specificity:**

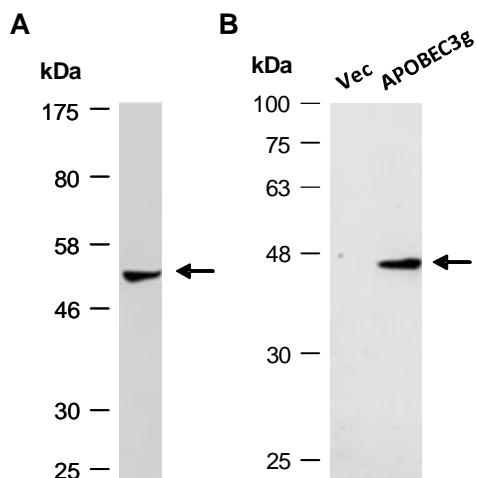
Human

### **Tested Applications:**

WB: 1:500-1:1,000 (detect endogenous protein\*)

\*: The apparent protein size on WB may be different from the calculated M.W. due to modifications.

**Product Data:**



**Fig 1. A)** Western blot of total cell extracts from human Jurkat, using anti-APOBEC3g (M2) (R0873-2) at RT for 2 h. **B)** Same as in **A** except that protein extracts from human 293T cells transfected with a vector control (Vec) or an APOBEC3g expression construct were used. The overexpressed APOBEC3g is observed as a 46 kD protein.