



Order: (888)-282-5810 (Phone)  
(818)-707-0392 (Fax)  
[order@abiocode.com](mailto:order@abiocode.com)  
Web: [www.Abiocode.com](http://www.Abiocode.com)

---

## LHP1 (N) Antibody, Rabbit Polyclonal

**Cat#:** R3393-1

**Quantity:** 100 ul

**Predicted | Observed M.W.:** 49 | 90 kDa

**Lot#:** Refer to vial

**Application:** WB

**Uniprot ID:** Q946J8

### **Background:**

LHP1 is a structural component of heterochromatin involved in gene repression, including several floral homeotic genes and FLT that regulates flowering time. LHP1 is required for maintenance of vernalization-induced repression of FLC. As part of the PRC1-like complex, LHP1 recognizes and binds histone H3 tails methylated at 'Lys-9' (H3K9me) and 'Lys-27' (H3K27me), leading to epigenetic repression. PcG PRC1 complex maintains the transcriptionally repressive state of many genes, including Hox genes, throughout development. PcG PRC1 complex acts via chromatin remodeling and modification of histones, rendering chromatin heritably changed in its expressibility.

### **Other Names:**

Chromo domain-containing protein LHP1, Protein LIKE HETEROCHROMATIN PROTEIN 1, Protein TERMINAL FLOWER 2, TFL2, TU8, At5g17690, MVA3.4, ATLHP1, FLT2

### **Source and Purity:**

Rabbit polyclonal antibodies were produced by immunizing animals with a GST-fusion protein containing the N-terminal region of *arabidopsis thaliana* LHP1 (At5g17690). Antibodies were purified by affinity purification using immunogen.

### **Storage Buffer and Condition:**

Supplied in 1 x PBS (pH 7.4), 100 ug/ml BSA, 40% Glycerol, 0.01% NaN<sub>3</sub>. Store at -20 °C. Stable for 6 months from date of receipt.

### **Species Specificity:**

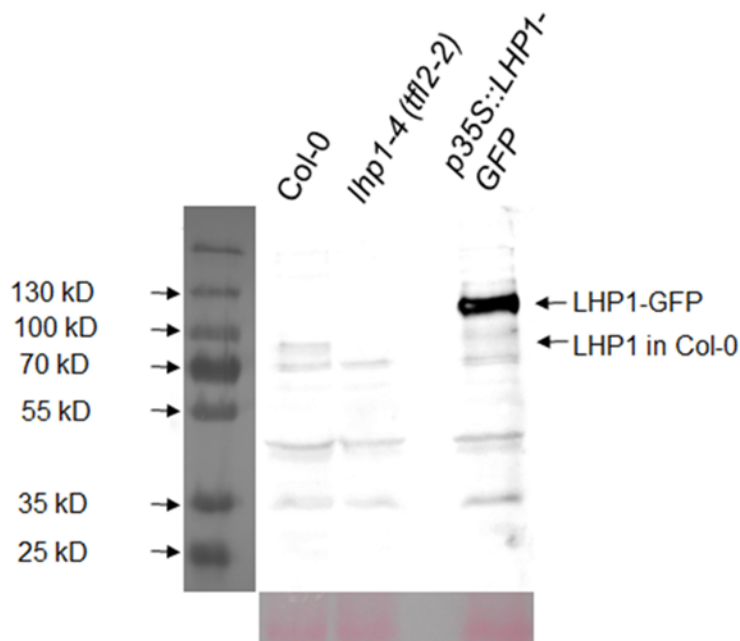
*Arabidopsis thaliana*

### **Tested Applications:**

WB: 1:500-1:2,000 (detect endogenous protein\*)

\*: The apparent protein size on WB may be different from the calculated M.W. due to modifications.

**Product Data:**



**Fig 1.** Western blot analysis of total protein extracts from 9 d-old *Arabidopsis* seedlings of wild type (*Col-0*), *LHP1* deficient mutant (*lhp1-4*), and *LHP1-GFP* expressing line, using anti-*LHP1* (N) antibody (R3393-1) at 1:1000 dilution for 2h at RT. Ponceau staining at the bottom shows equal loading (data provided by M. Timmermans, ZMBP, University of Tuebingen). *LHP1* may migrate as a dimer under these conditions.