



Order: (888)-282-5810 (Phone)  
(818)-707-0392 (Fax)  
[order@abiocode.com](mailto:order@abiocode.com)  
Web: [www.Abiocode.com](http://www.Abiocode.com)

---

## **DREB2A (C) Antibody, Rabbit Polyclonal**

**Cat#: R3448-2**

**Quantity: 100 ul**

**Predicted | Observed M.W.: 38 kDa**

**Lot#: Refer to vial**

**Application: WB**

**Uniprot ID: O82132**

### **Background:**

DREB2A is a transcriptional activator that binds specifically to the DNA sequence 5'-[AG]CCGAC-3'. Binding to the C-repeat/DRE element mediates high salinity- and dehydration-inducible transcription.

### **Other Names:**

Dehydration-responsive element-binding protein 2A, Protein DREB2A, ERF045, At5g05410, K18I23.22, DEHYDRATION-RESPONSIVE ELEMENT BINDING PROTEIN 2, DRE-BINDING PROTEIN 2A, DREB2

### **Source and Purity:**

Rabbit polyclonal antibodies were produced by immunizing animals with a GST-fusion protein containing the C-terminal region of *arabidopsis thaliana* DREB2A (At5g05410). Antibodies were purified by affinity purification using immunogen.

### **Storage Buffer and Condition:**

Supplied in 1 x PBS (pH 7.4), 100 ug/ml BSA, 40% Glycerol, 0.01% NaN<sub>3</sub>. Store at -20 °C. Stable for 6 months from date of receipt.

### **Species Specificity:**

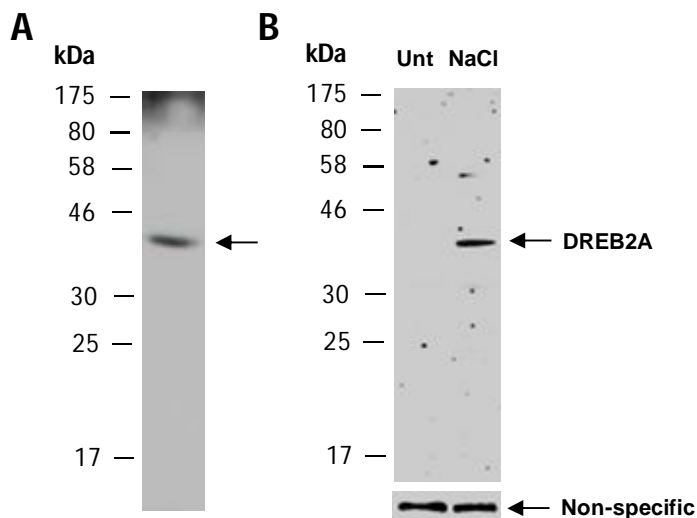
*Arabidopsis thaliana*

### **Tested Applications:**

WB: 1:500-1:2,000 (detect endogenous protein\*)

\*: The apparent protein size on WB may be different from the calculated M.W. due to modifications.

**Product Data:**



**Fig 1. A)** Western blot analysis of total protein extracts from wild type arabidopsis leaves, using anti-DREB2A (C) (R3448-2) at RT for 2 h. **B)** Same as in A except that protein extracts were prepared from wild type arabidopsis whole plants either untreated (Unt) or treated with 250mM NaCl for 3 h. DREB2A is known to be induced by high-salt treatment (Liu et al., *Plant Cell*, 1998,10:1391–1406).