



Order: (888)-282-5810 (Phone)
(818)-707-0392 (Fax)
order@abiocode.com
Web: www.Abiocode.com

FKF1 (C) Antibody, Rabbit Polyclonal

Cat#: R1004-3

Quantity: 100 ul

Predicted | Observed M.W.: 69 kDa

Lot#: Refer to vial

Application: WB

Uniprot ID: Q9C9W9

Background:

Flavin-binding kelch repeat F-box protein 1 (FKF1) is also known as Adagio protein 3 (ADO3), which is a component of an E3 ubiquitin ligase complex that plays a central role in blue light-dependent circadian cycles. FKF1 acts as a blue light photoreceptor, due to the presence of FMN, that mediates light-regulated protein degradation of critical clock components by targeting them to the proteasome complex. The SCF(ADO3) E3 ubiquitin ligase complex is involved in the regulation of circadian clock-dependent processes including transition to flowering time, hypocotyl elongation, cotyledons and leaf movement rhythms. FKF1 forms a complex with 'GIGANTEA' (GI) to regulates 'CONSTANS' (CO) expression. FKF1 promotes CO expression during the light period of long days by decreasing the stability of CDF1 and CDF2 and by interacting directly with the CO protein and stabilizing it.

Other Names:

Adagio protein 3, ADO3, F-box only protein 2a, FBX2a, Flavin-binding kelch repeat F-box protein 1

Source and Purity:

Rabbit polyclonal antibodies were produced by immunizing animals with a GST-fusion protein containing the C-terminal region of *arabidopsis thaliana* FKF1 (At1g68050). Antibodies were purified by affinity purification using immunogen.

Storage Buffer and Condition:

Supplied in 1 x PBS (pH 7.4), 100 ug/ml BSA, 40% Glycerol, 0.01% NaN₃. Store at -20 °C. Stable for 6 months from date of receipt.

Species Specificity:

Arabidopsis thaliana

Tested Applications:

WB: 1:500-1:2,000 (detect endogenous protein*)

*: The apparent protein size on WB may be different from the calculated M.W. due to modifications.

Product Data:

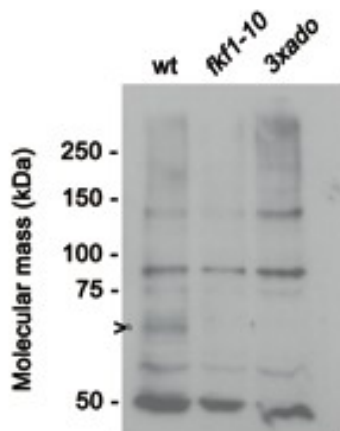


Fig 1. Western blot analysis of 30 μ g of total protein extracts from 12 d-old *Arabidopsis* seedlings harvested 10 hrs after dawn in a long day photo cycle from WT, a *fkf1*-null single mutant (*fkf1-10*) or a triple KO mutants for *FKF1* and *FKF1*-like proteins (also known as *ADAGIO* gene family) (*3xado*), using anti-*FKF1* (C) (R1004-3) at 1:1000 dilution at 4°C overnight (data provided by L. Conti, Università degli Studi di Milano, Italy).