



Order: (888)-282-5810 (Phone)  
(818)-707-0392 (Fax)  
[order@abiocode.com](mailto:order@abiocode.com)  
Web: [www.Abiocode.com](http://www.Abiocode.com)

---

## **TET2 (N1) Antibody, Rabbit Polyclonal**

**Cat#: R1086-1c**

**Quantity: 100 ul**

**Predicted | Observed M.W.: 224 | 250 kDa**

**Lot#: Refer to vial**

**Application: WB**

**Uniprot ID: Q6N021**

### **Background:**

TET2 is a methylcytosine dioxygenase that catalyzes the conversion of methylcytosine (5mC) to 5-hydroxymethylcytosine (5hmC). 5-hydroxymethylcytosine may influence chromatin structure and recruit specific factors or may constitute an intermediate component in cytosine demethylation. TET2 plays an important role in myelopoiesis, and defects in TET2 gene have been associated with several myeloproliferative disorders.

### **Other Names:**

Methylcytosine dioxygenase TET2, KIAA1546

### **Source and Purity:**

Rabbit polyclonal antibodies were produced by immunizing animals with a GST-fusion protein containing the N-terminal region of human TET2. Antibodies were purified by affinity purification using immunogen.

### **Storage Buffer and Condition:**

Supplied in 1 x PBS (pH 7.4), 100 ug/ml BSA, 40% Glycerol, 0.01% NaN<sub>3</sub>. Store at -20 °C. Stable for 6 months from date of receipt.

### **Species Specificity:**

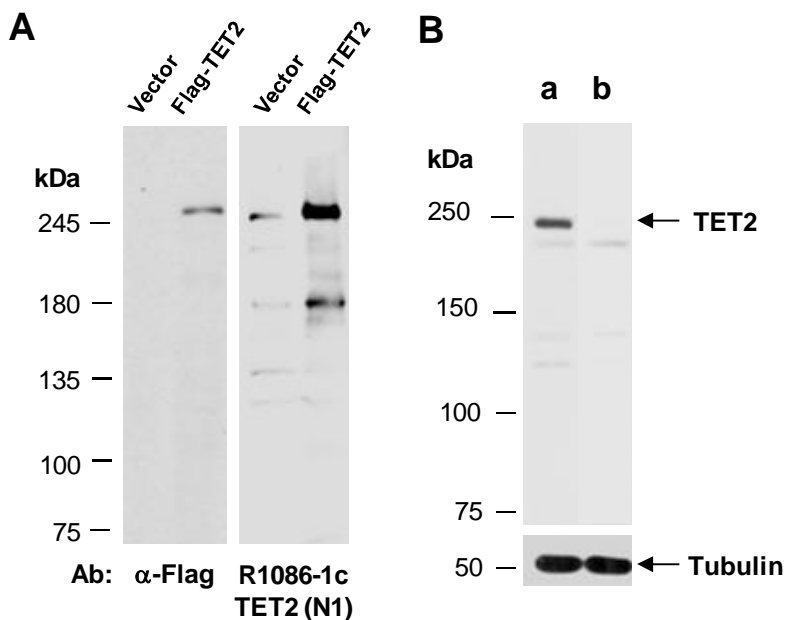
Human, Mouse

### **Tested Applications:**

WB: 1:500-1:2,000 (detect endogenous protein\*)

\*: The apparent protein size on WB may be different from the calculated M.W. due to modifications.

**Product Data:**



**Fig 1. A)** Western blot of total cell extracts from human 293 T cells transfected with a vector control, or Flag-tagged human TET2; using indicated Abs at RT for 2h. **B)** Western blot of total cell extracts from mouse MEF cells containing a control shRNA (a) or a shRNA specific for murine TET2 (b); using anti-TET2 (N1) (R1086-1c) or anti-Tubulin (N) (R0267-1) at RT for 2h.