



Order: (888)-282-5810 (Phone)
(818)-707-0392 (Fax)
order@abiocode.com
Web: www.Abiocode.com

PIF1 (N2) Antibody, Rabbit Polyclonal

Cat#: R3446-3

Quantity: 100 ul

Predicted | Observed M.W.: 53 | 57, 63 kDa

Lot#: Refer to vial

Application: WB

Uniprot ID: Q8GZM7

Background:

PIF1 is a transcription activator. PIF1 regulates negatively chlorophyll biosynthesis and seed germination in the dark, and light-induced degradation of PIF1 relieves this negative regulation to promote photomorphogenesis. PIF1 binds to the G-box motif (5'-CACGTG-3') found in many light-regulated promoters. PIF1 promotes the expression of SOM, and thus modulates responses to abscisic acid (ABA) and gibberellic acid (GA).

Other Names:

Transcription factor PIF1, Basic helix-loop-helix protein 15, AtbHLH15, bHLH 15, Protein PHY-INTERACTING FACTOR 1, Protein PHYTOCHROME INTERACTING FACTOR 3-LIKE 5, Transcription factor EN 101, bHLH transcription factor bHLH015, At2g20180, BHLH15, EN101, PIL5, T2G17.2

Source and Purity:

Rabbit polyclonal antibodies were produced by immunizing animals with a GST-fusion protein containing the N-terminal region of *arabidopsis thaliana* PIF1 (AT2G20180). Antibodies were purified by affinity purification using immunogen.

Storage Buffer and Condition:

Supplied in 1 x PBS (pH 7.4), 100 ug/ml BSA, 40% Glycerol, 0.01% NaN₃. Store at -20 °C. Stable for 6 months from date of receipt.

Species Specificity:

Arabidopsis thaliana

Tested Applications:

WB: 1:500-1:2,000 (detect endogenous protein*)

*: The apparent protein size on WB may be different from the calculated M.W. due to modifications.

Product Data:

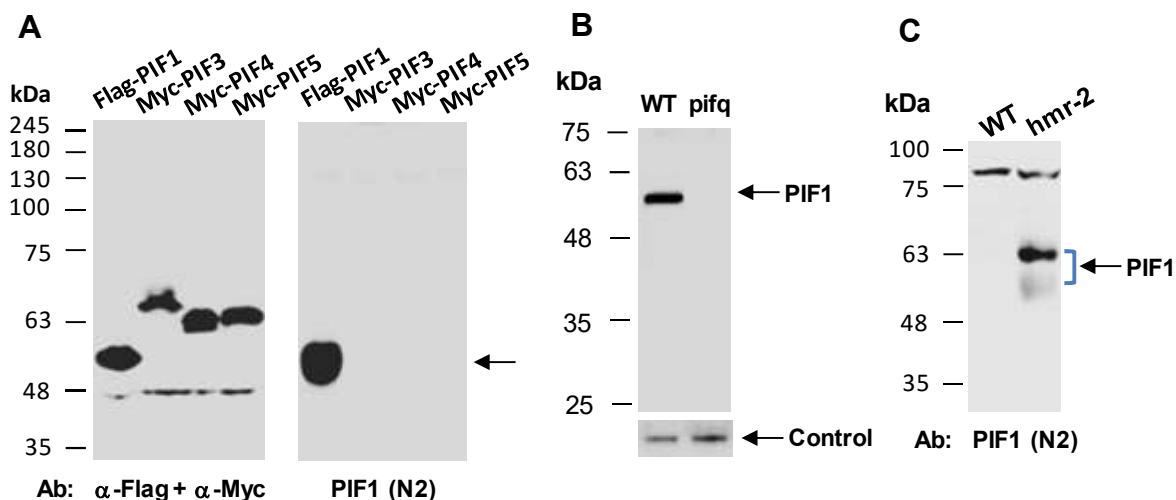


Fig 1. A) Western blot of total protein extracts from human 293T cells transfected with Flag-tagged *Arabidopsis* PIF1, Myc-tagged *Arabidopsis* PIF3, PIF4 or PIF5, using a mixture of anti-Flag and anti-Myc Abs or anti-PIF1 (N2) (R3446-3) Ab as indicated at RT for 2h. **B)** Western blot of equal amounts of protein extracts from wild type (WT) or *pifq*-mutant (PIF1/3/4/5-deficient) *Arabidopsis* leaves, using anti-PIF1 (N2) (R3446-3) at RT for 2 h. The same filter was re-probed with a non-relevant Ab for loading control. **C)** Same as in **B)** except protein extracts used were prepared from red-light grown wild type (WT) or *hmr-2* mutant (Salk_025099) seedlings. PIF1 is known to be stabilized in *hmr-2* mutant (Chen et al., *Cell*, 2010, 141:1230-1240).