



Order: (888)-282-5810 (Phone)
(818)-707-0392 (Fax)
order@abiocode.com
Web: www.Abiocode.com

RELN (C) Antibody, Rabbit Polyclonal

Cat#: R3210-2

Quantity: 100 ul

Predicted | Observed M.W.: 388 kDa

Lot#: Refer to vial

Application: WB

Uniprot ID: P78509

Background:

RELN is a large secreted extracellular matrix protein thought to control cell-cell interactions critical for cell positioning and neuronal migration during brain development. RELN is an extracellular matrix serine protease that plays a role in layering of neurons in the cerebral cortex and cerebellum. RELN regulates microtubule function in neurons and neuronal migration. RELN also affects migration of sympathetic preganglionic neurons in the spinal cord, where it seems to act as a barrier to neuronal migration. The enzymatic activity of RELN is important for the modulation of cell adhesion. This protein may be involved in schizophrenia, autism, bipolar disorder, major depression and in migration defects associated with temporal lobe epilepsy. Mutations of the RELN gene are associated with autosomal recessive lissencephaly with cerebellar hypoplasia.

Other Names:

Reelin

Source and Purity:

Rabbit polyclonal antibodies were produced by immunizing animals with a GST-fusion protein containing the C-terminal region of human RELN. Antibodies were purified by affinity purification using immunogen.

Storage Buffer and Condition:

Supplied in 1 x PBS (pH 7.4), 100 ug/ml BSA, 40% Glycerol, 0.01% NaN₃. Store at -20 °C. Stable for 6 months from date of receipt.

Species Specificity:

Human, Mouse

Tested Applications:

WB: 1:500-1:2,000 (detect endogenous protein*)

*: The apparent protein size on WB may be different from the calculated M.W. due to modifications.

Product Data:

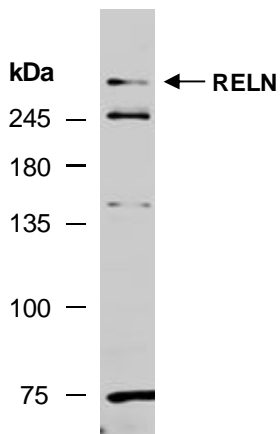


Fig 1. Western blot of total cell extracts from human HeLa, using anti-RELN (C) (R3210-2) at RT for 2 h.